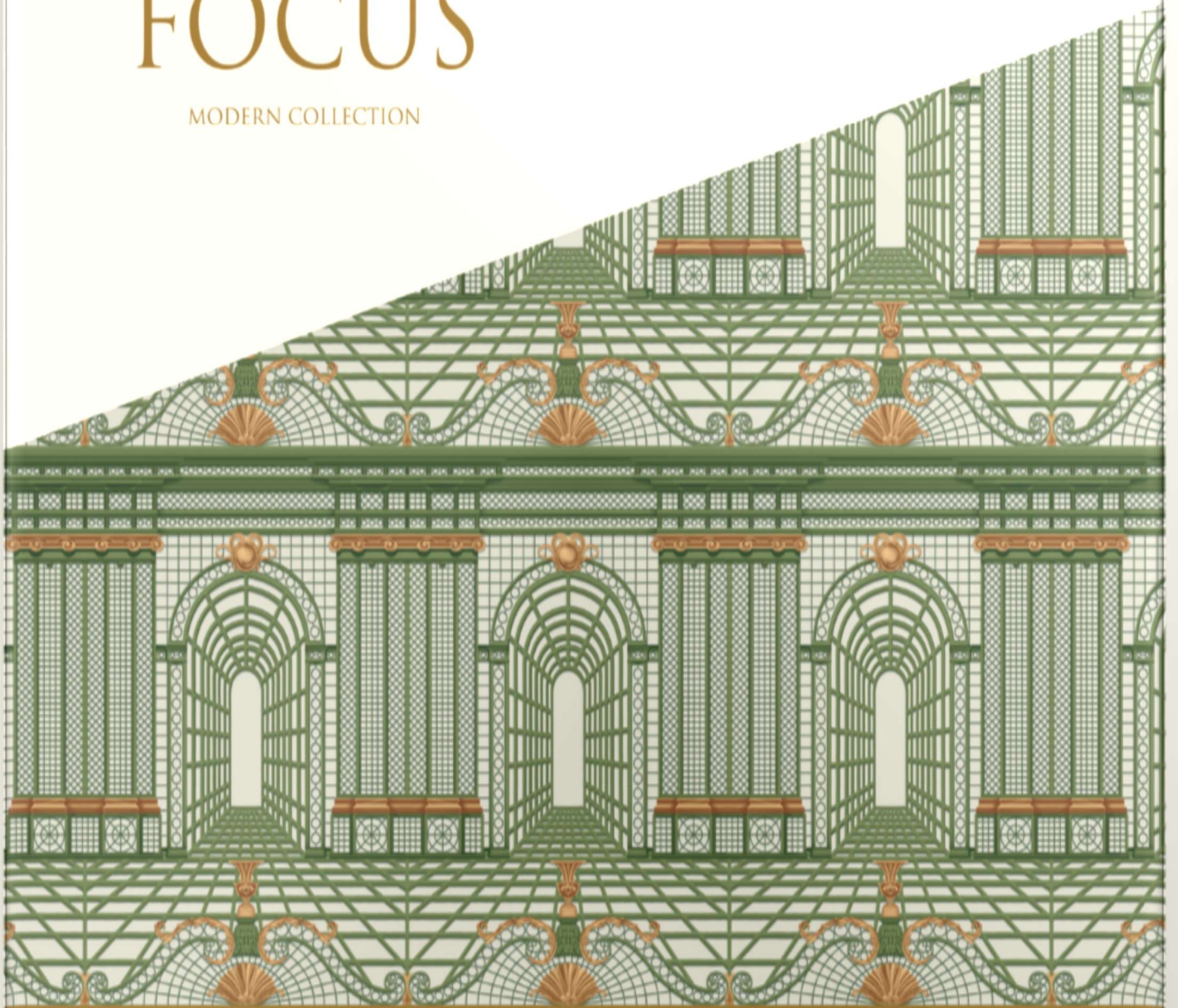


FOCUS

MODERN COLLECTION



SHINHAN WALLCOVERINGS
MADE IN KOREA



The value Shinhan Wallcoverings expresses in space
is a pursuit of beauty by architecture.

FOCUS SWATCH

88504 Pris 88503 Pris base



88504-1 1A/p

-2 4p

-3 5p



88503-1 2p

-2 3p

-3 6p

88502 Shine cube



88502-1 7p

-2 8p

-3 9p

-4 10p

88501 Timor 88500 Mor



88501-1 16p

-2 14p

-3 18A/p



88500-1 37p

-2 15p

-3 12,35p

-4 13p

88499 Liber 88498 Liber base



88499-1 22p

-2 17p

-3 18p

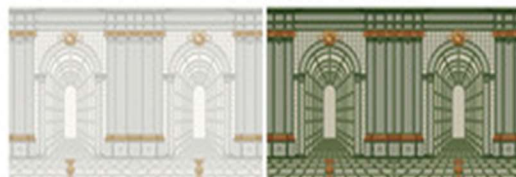


88498-1 27p

-2 20p

-3 17p

88497 Rene 88496 Rene base



88497-1 24p

-2 23p



88496-1 25p

-2 26p

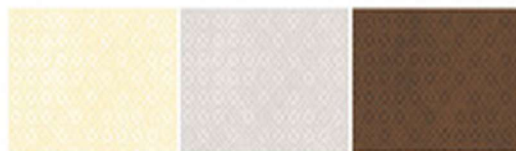
88495 Bonita 88494 Boni



88495-1 27p

-2 30p

-3 31p



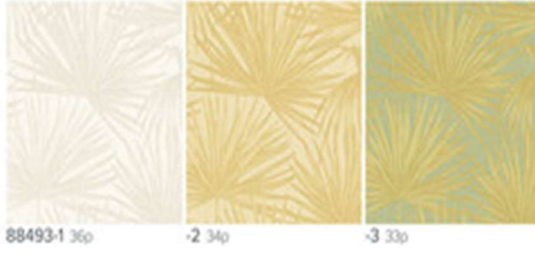
88494-1 28p

-2 29p

-3 32p

The value Shinhan Wallcoverings
expresses in space is a pursuit of beauty by architecture.

88493 Rhaps



88493-1 36p

-2 34p

-3 33p

88492 Ob 88491 Ob base



88492-1 38p

-2 40p

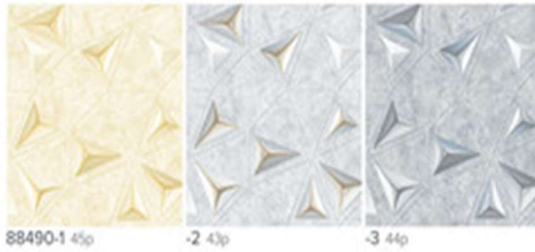
-3 42p



88491-1 39p

-2 41p

88490 Dia 88489 Dia base



88490-1 45p

-2 43p

-3 44p



88489-1 46p

-2 47p

-3 48p

88488 Curve 88487 Curve base



88488-1 49p

-2 51p

-3 50p

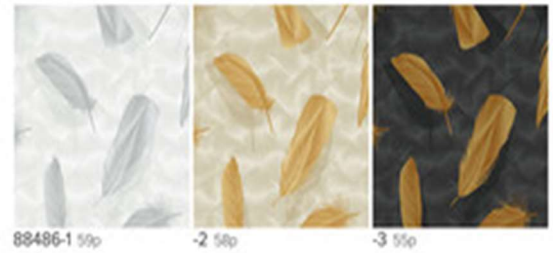


88487-1 53p

-2 52p

-3 54p

88486 Feather 88485 Feather base



88486-1 59p

-2 58p

-3 56p



88485-1 60p

-2 57p

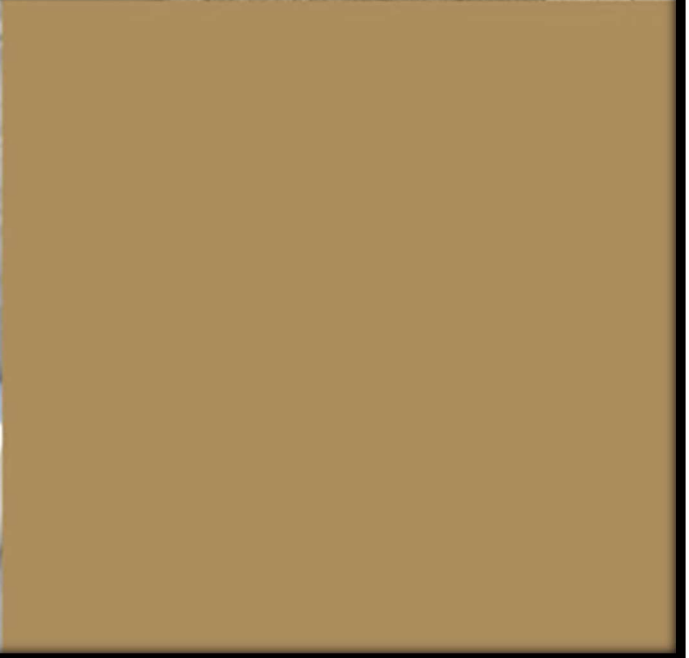
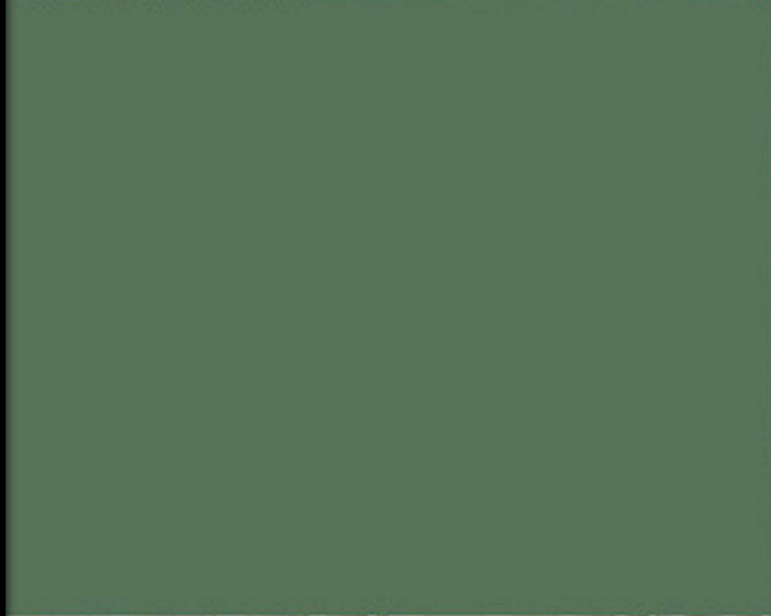
-3 56p

88484 Coffee time



88484-1 61p

-2 62p



PRIS

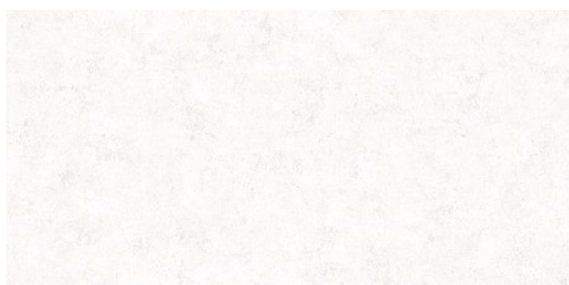
88504-1



FOC
ON ARCHITECTU



88504-1



88503-1



88503-1 PRIS BASE FOCUS COLLECTION

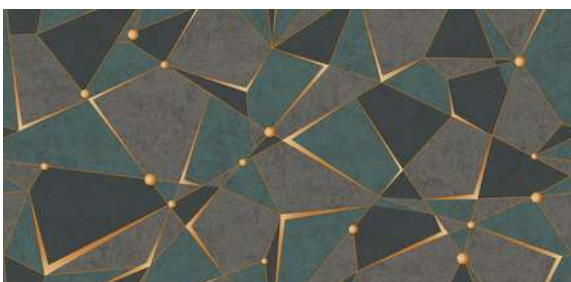




88504-2



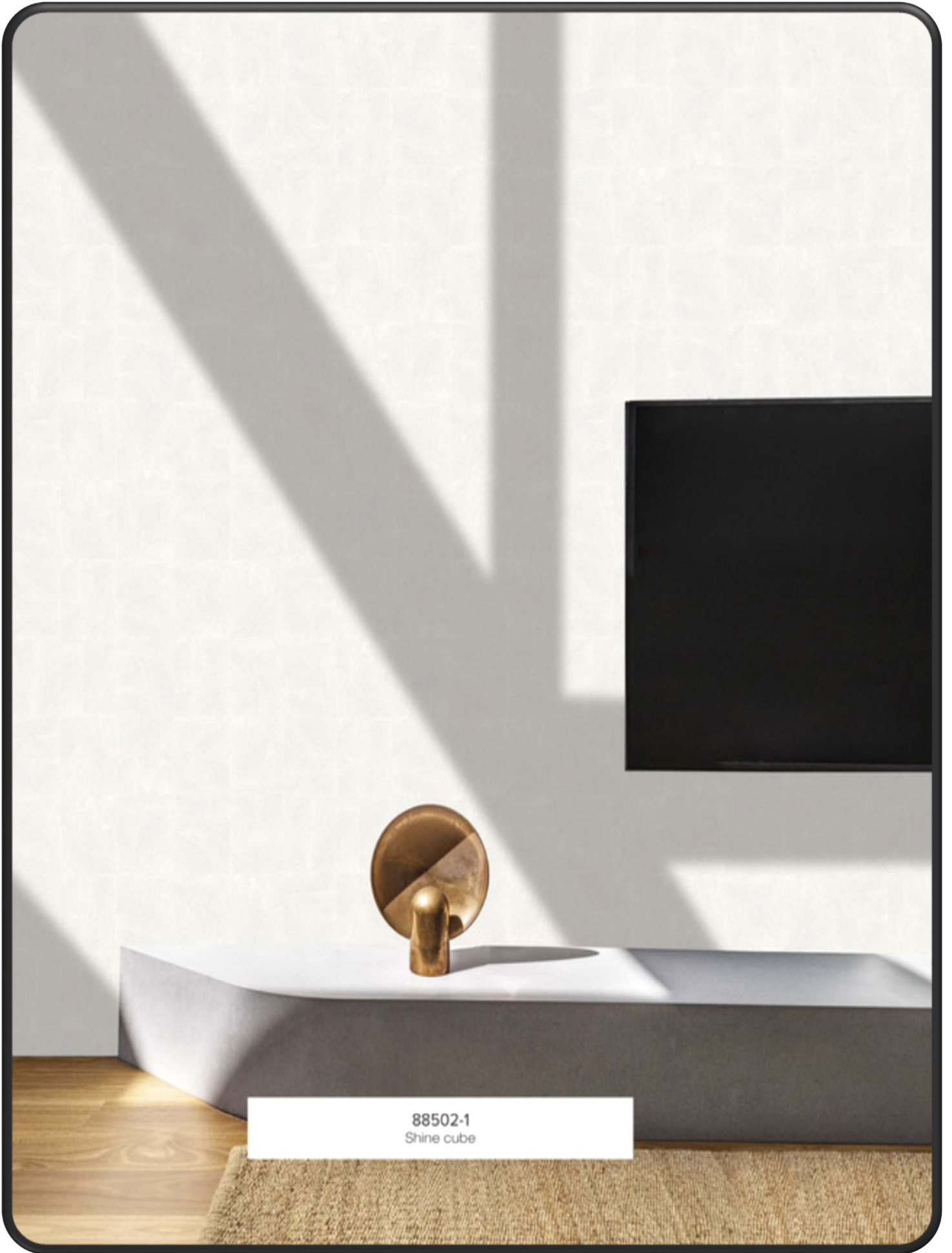
88503-2



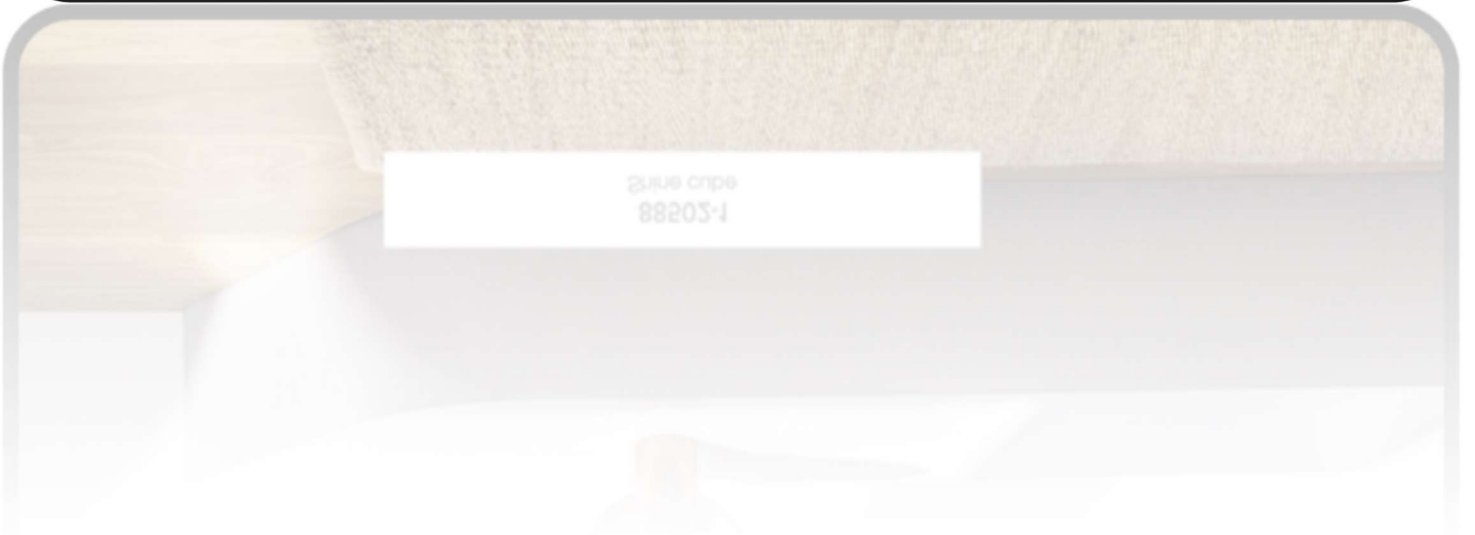
88504-3



88503-3



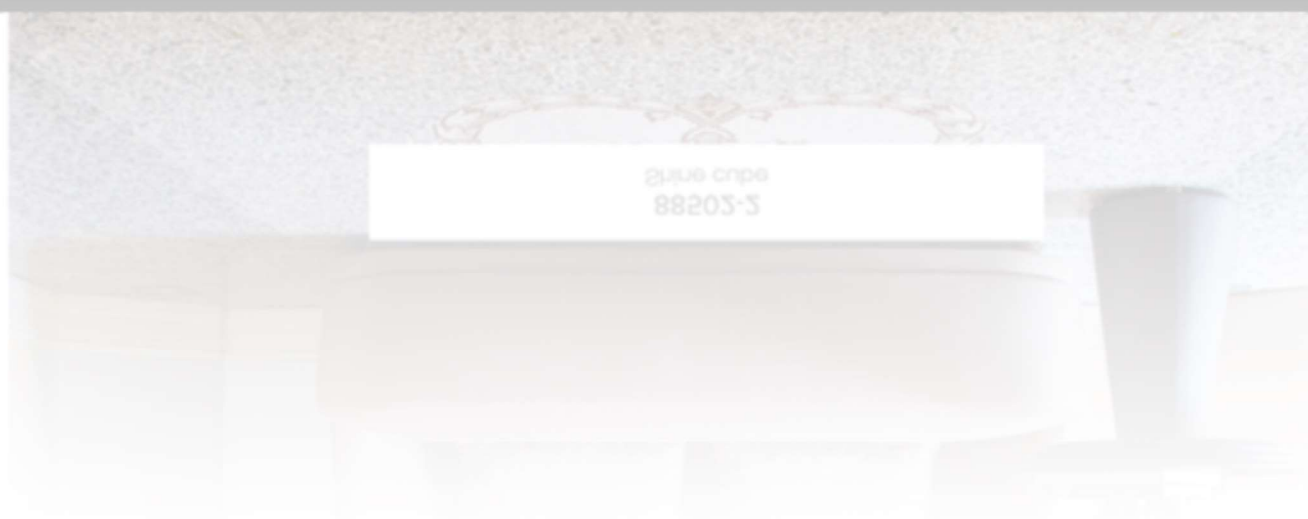
88502-1
Shine cube



88203-1
Shine cube



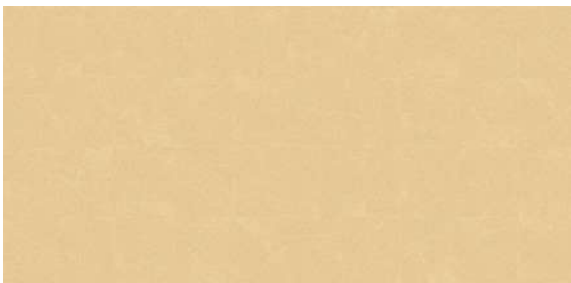
88502-2
Shine cube



shine cube
88203-3



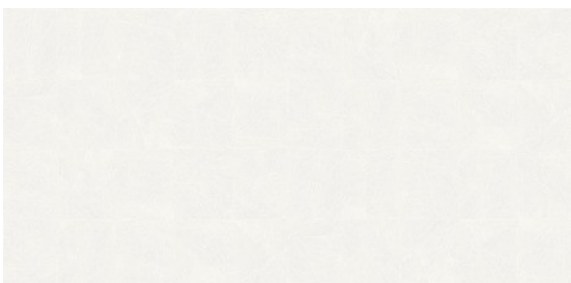
88502-4
Shine cube



88502-3



88502-2



88502-1



88502-4



88501-3



88500-3



88500-4



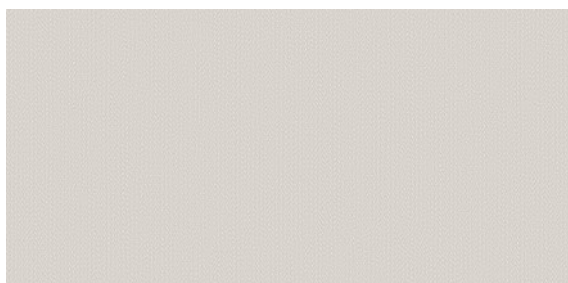
88501-3
Timor



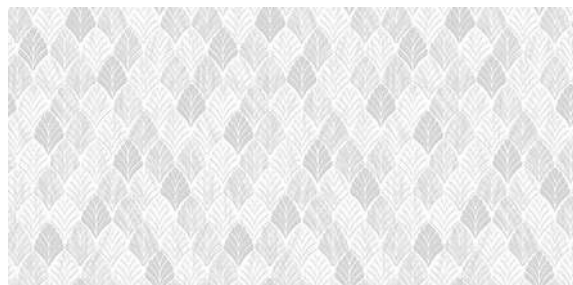
88201-3



88501-2



88500-2

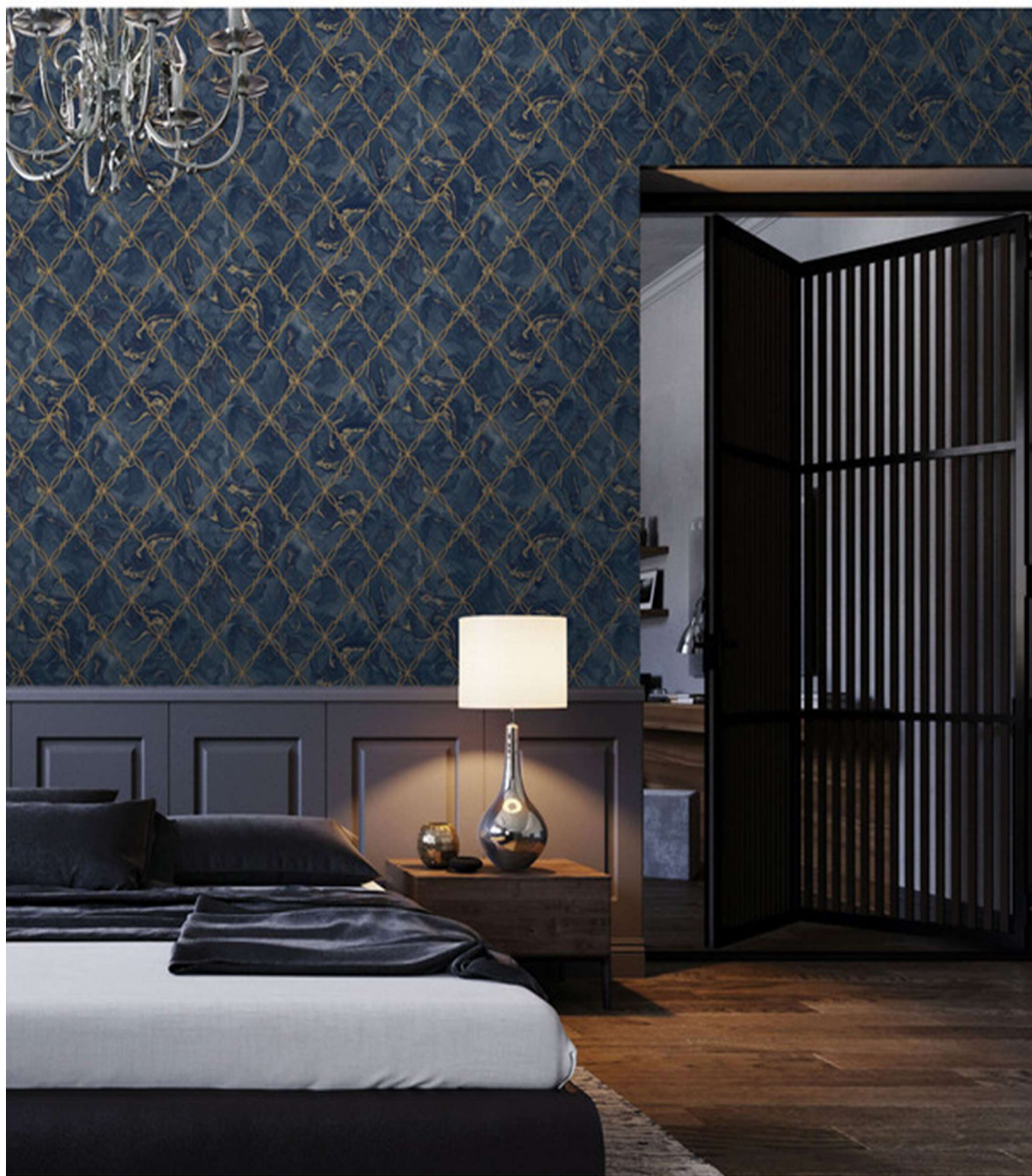


88501-1

**FOCUS ON
TEXTURE FROM
ARCHITECTURE.**

Shinhan wallcoverings

FOCUS
ON ARCHITECTURE



LIBER 88499-3



88499-3



88498-3



88499-2 LIBER FOCUS COLLECTION

88499-2
Liber



88499-2



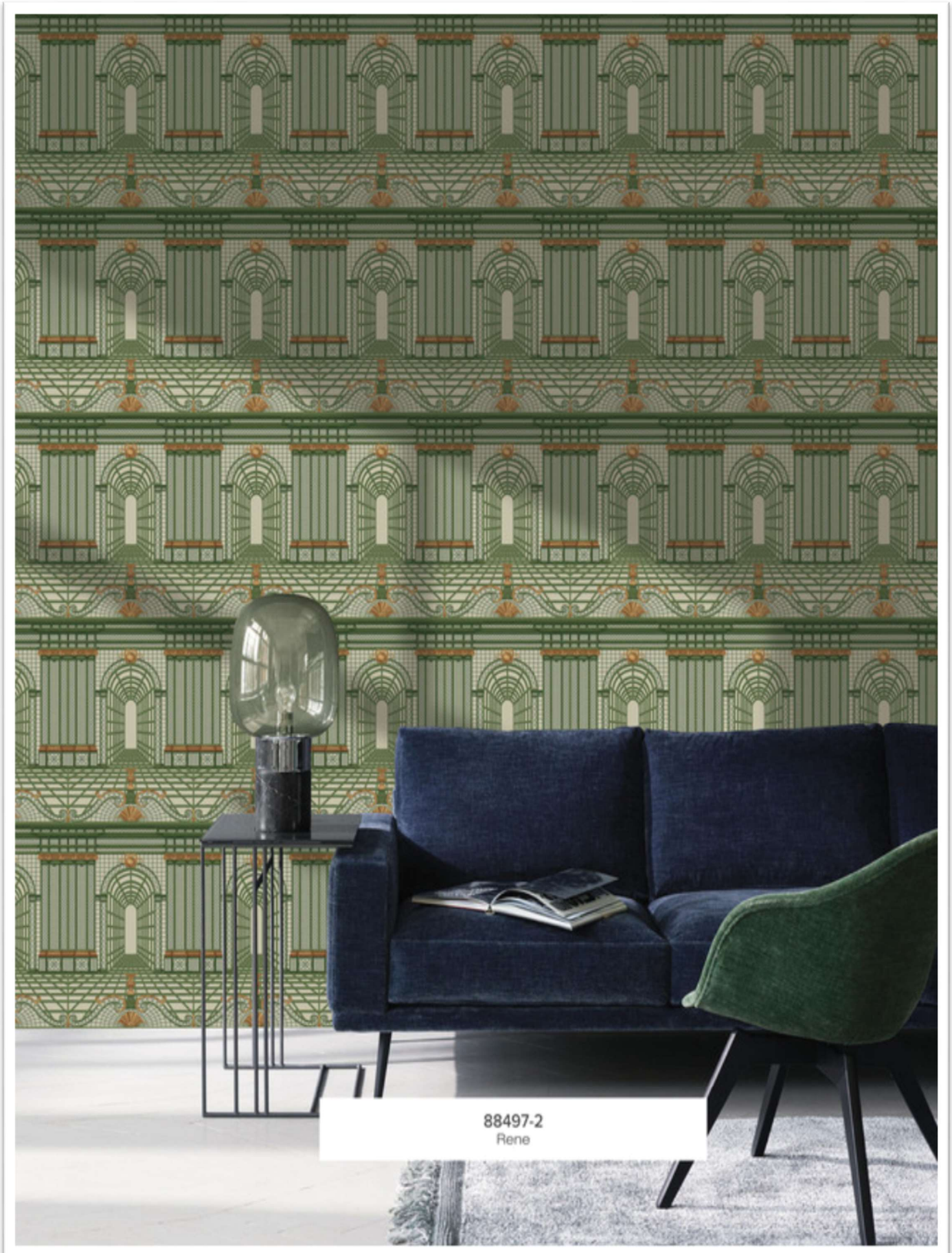
88498-2



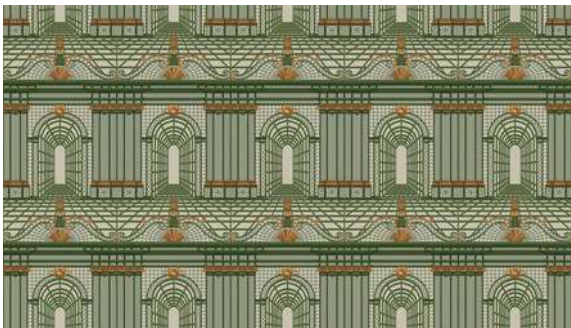
88499-1



88498-1



88497-2
Rene



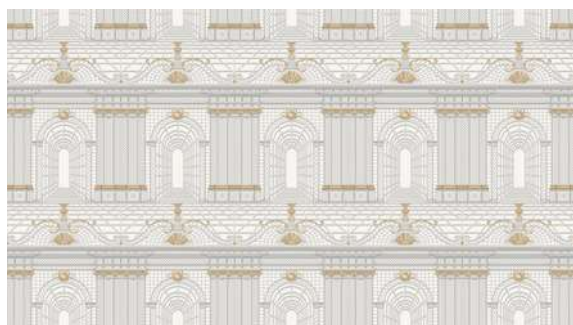
88497-2



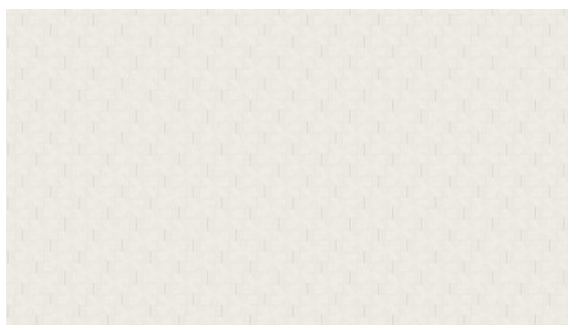
88496-2

88497-1 Rene

FOCUS COLLECTION



88497-1



88496-1



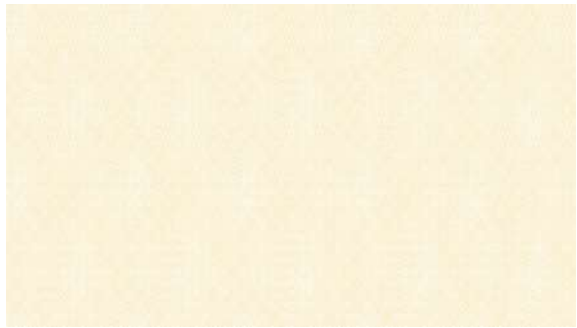
88497-1
Rene

88496-1
Rene base

88497-1 RENE - 88496-1 RENE



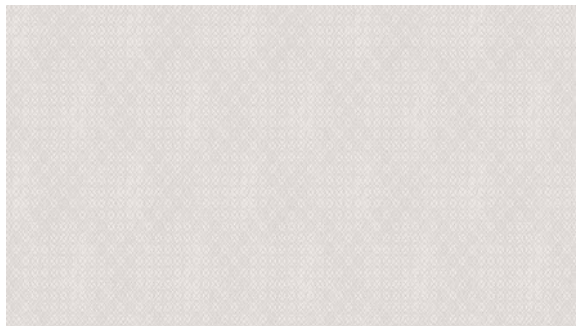
88495-1



88494-1



88495-2

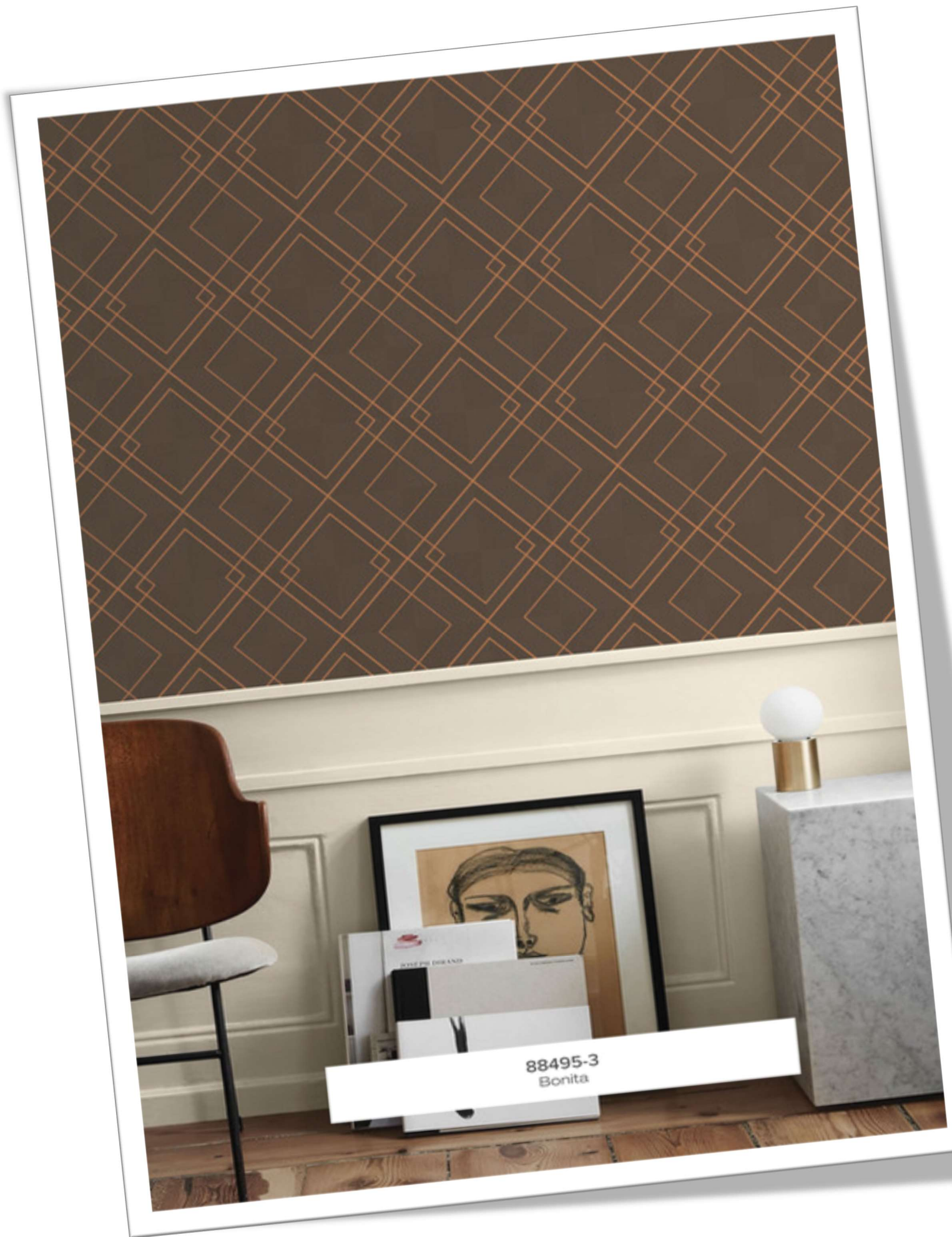


88494-2

FOCUS COLLECTION

88495-3 Bonita · 88494-3 Boni

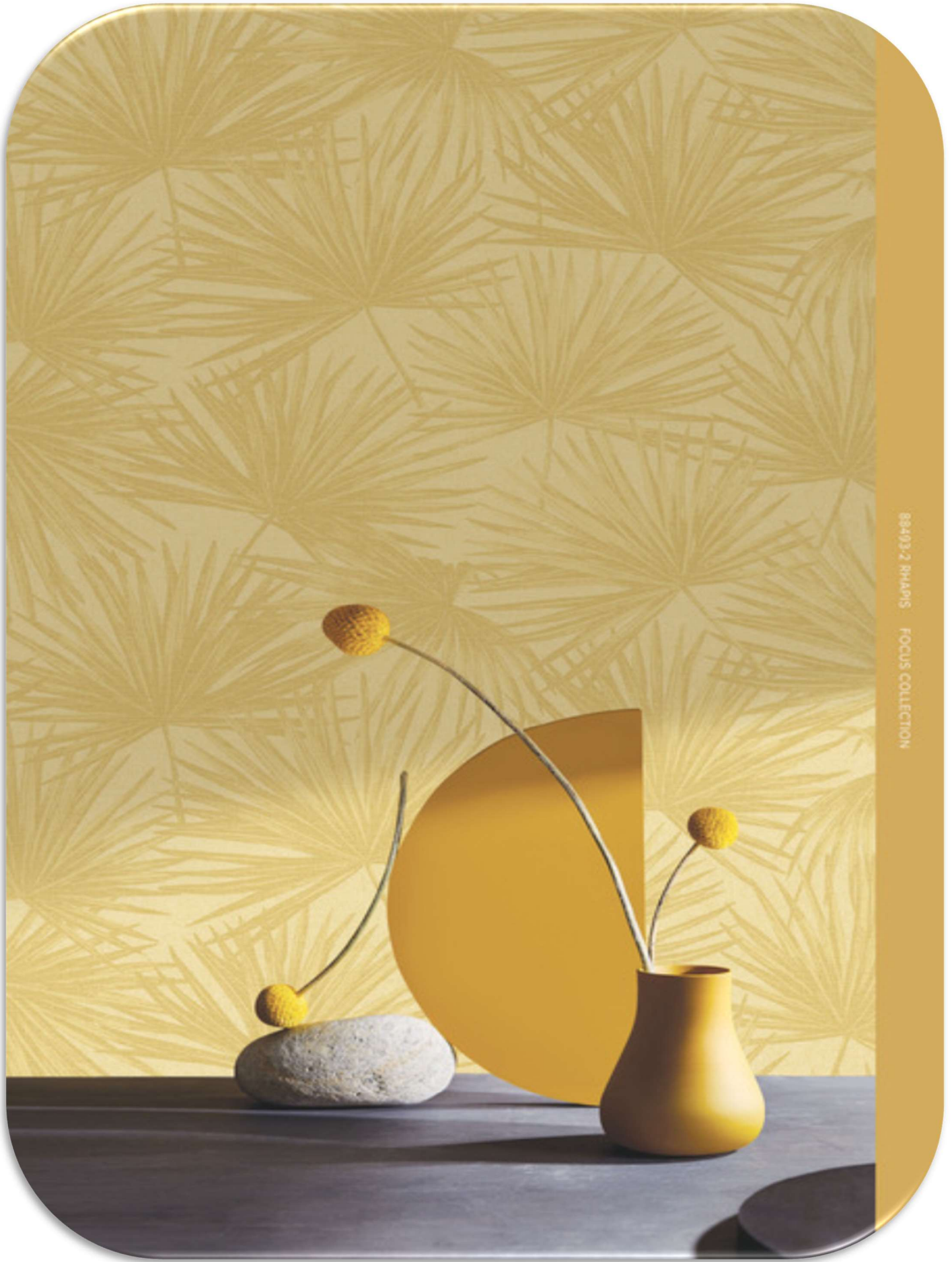




88495-3



88494-3



88493-2 RHAPSIS FOCUS COLLECTION



88493-2



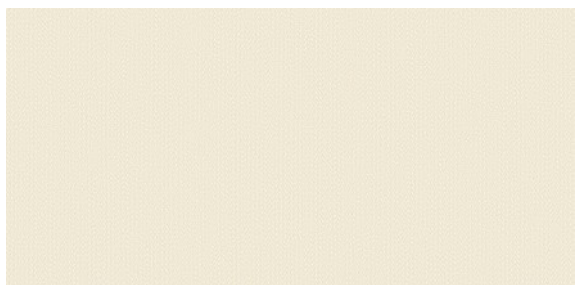
88500-3

FOCUS COLLECTION

88493-1 Rhapsis



88493-1



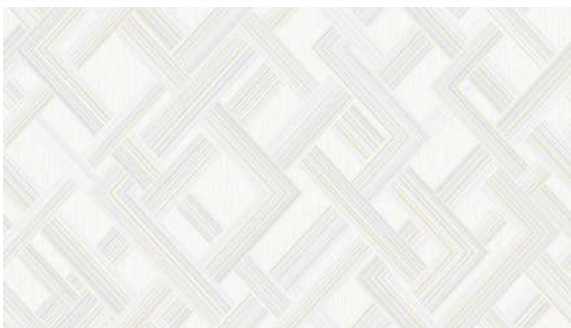
88500-1



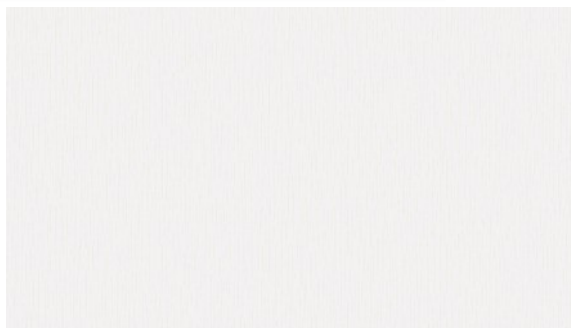
88493-3



88492-1
Ob



88492-1



88491-1



88492-2



88491-2



88492-3-OB FOCUS COLLECTION



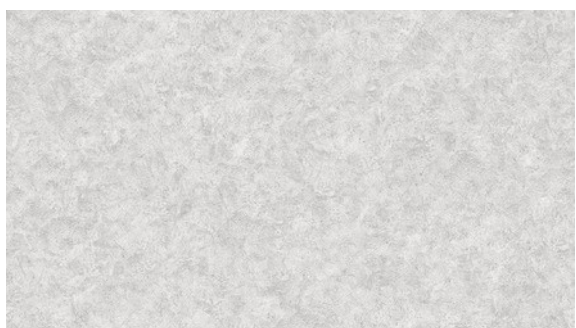
88492-3



88490-2
Dia



88490-2



88489-2



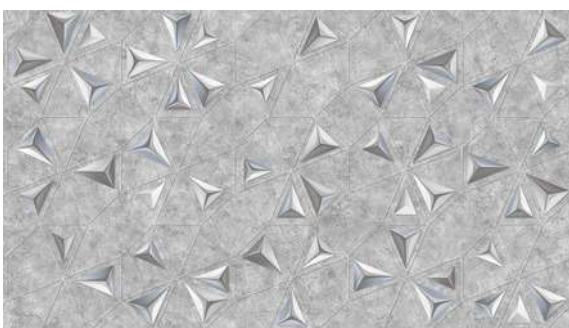
88489-1
Dia base



88490-1



88489-1



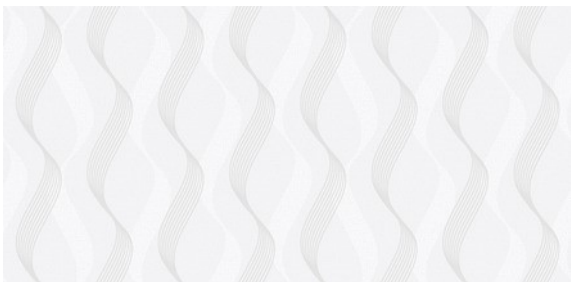
88490-3



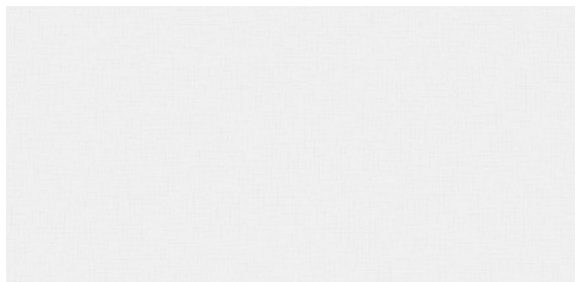
88489-3



88488-1
Curve



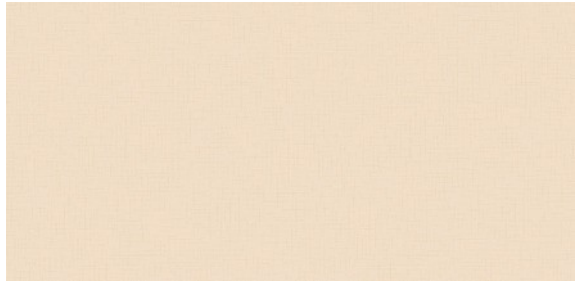
88488-1



88487-1



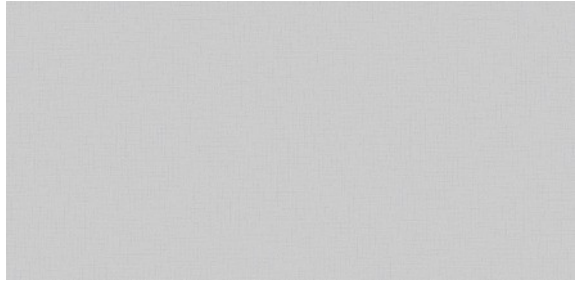
88488-2



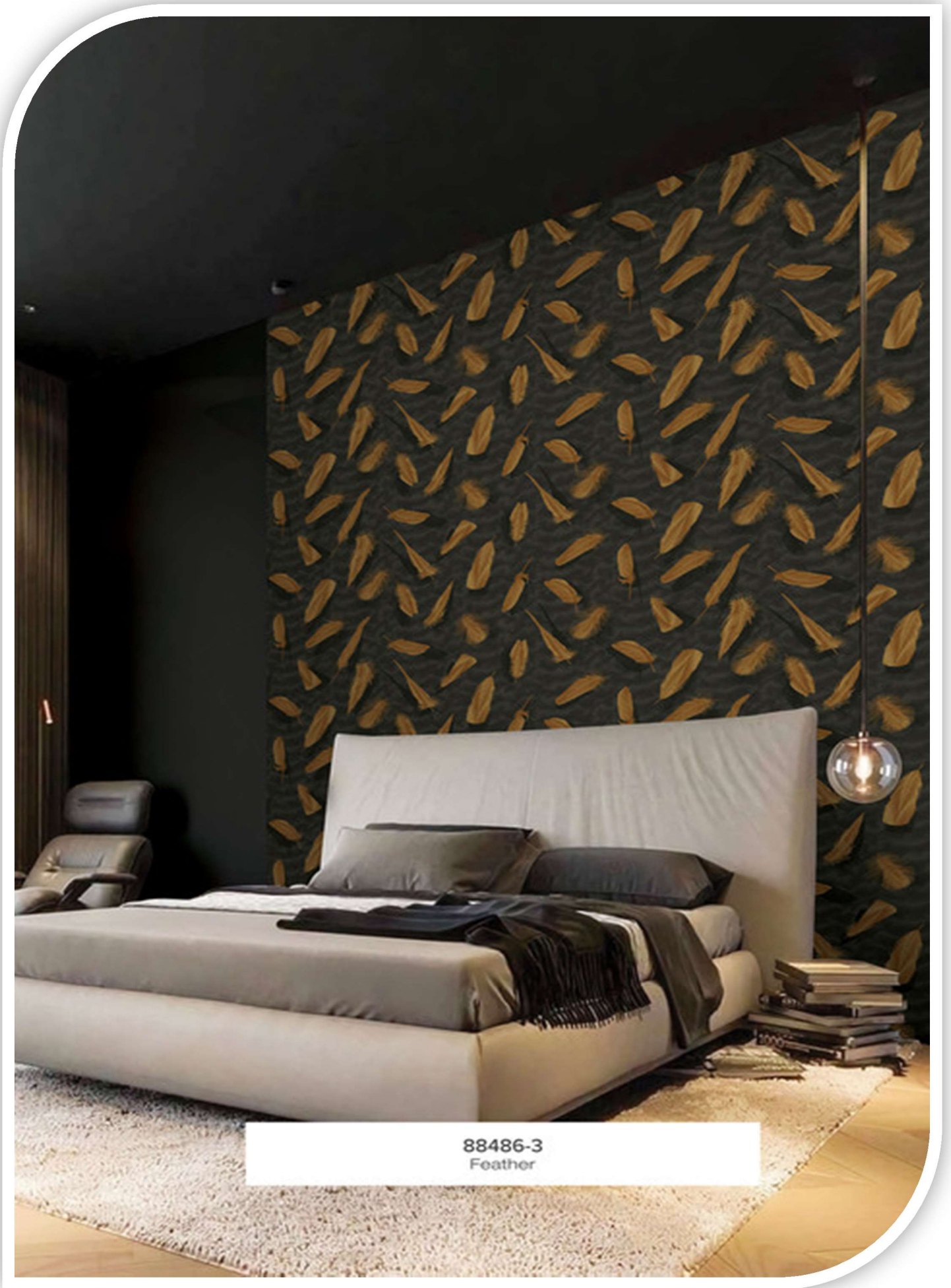
88487-2



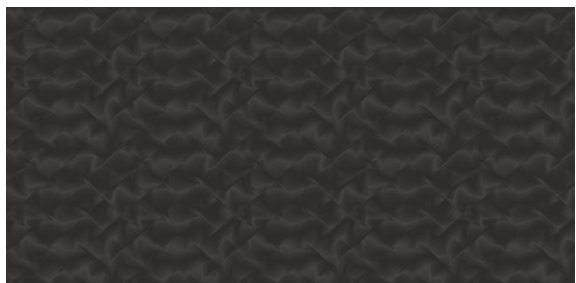
88488-3



88487-3



88486-3
Feather



88486-3

88485-3



88486-2



88485-2



88486-1



88485-1



88484-1
Coffee time



88484-2
Coffee time



88484-1



88484-2