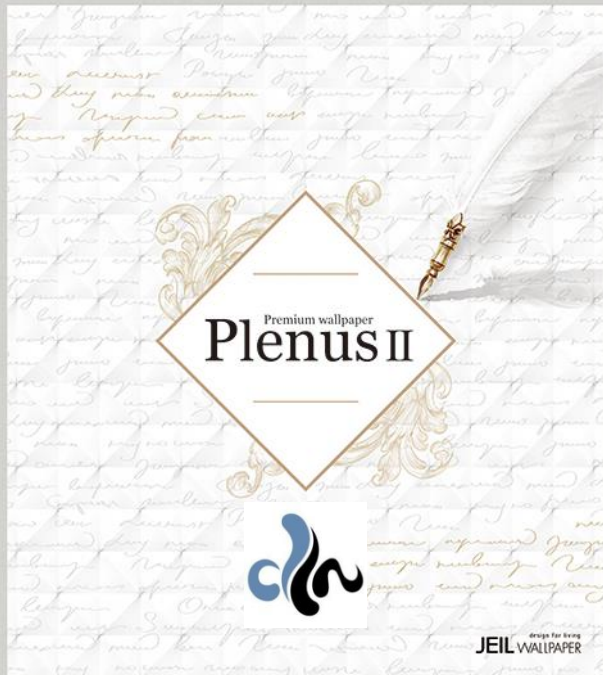


UPDATED

01-08-2022

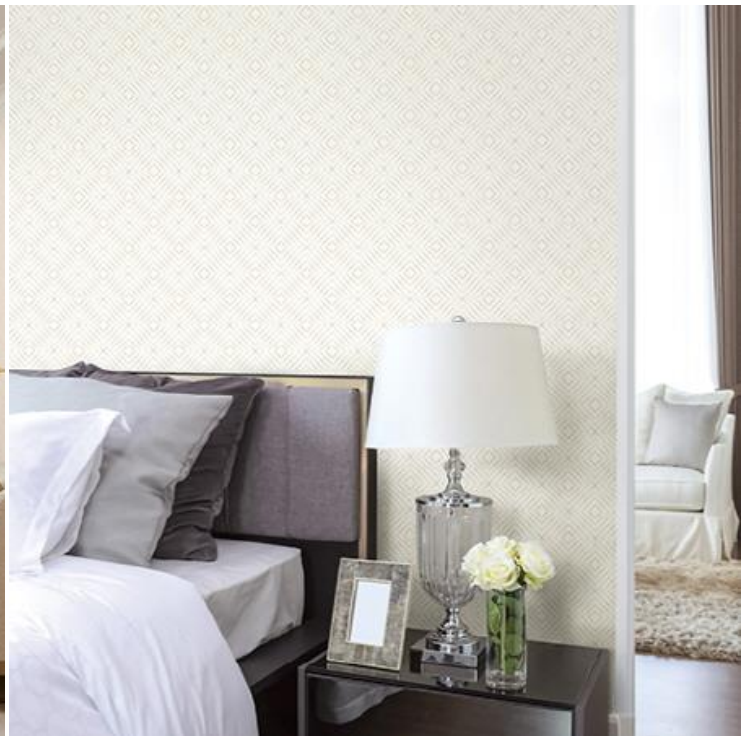
Premium wallpaper
Plenus II



JEIL
design for living
WALLPAPER

design for living
JEIL WALLPAPER

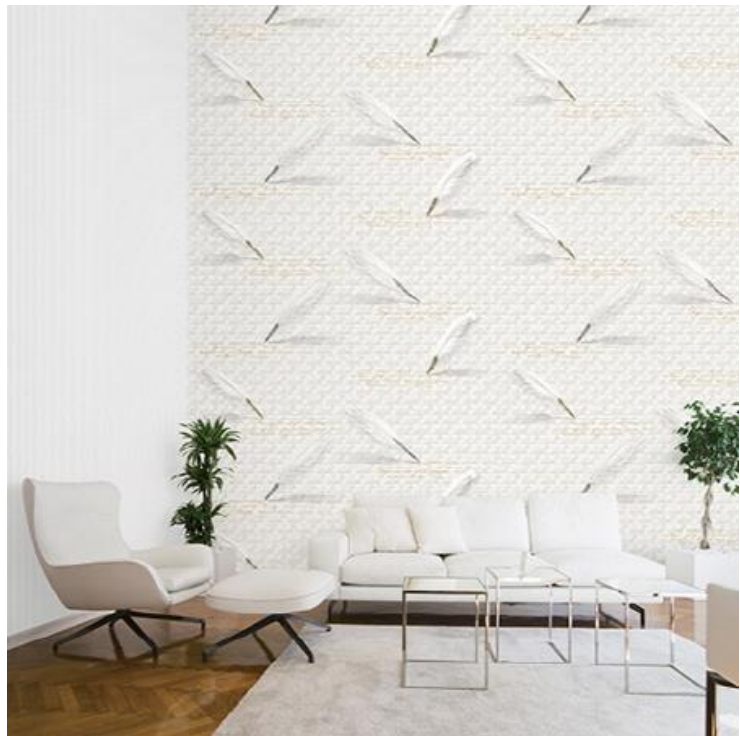


























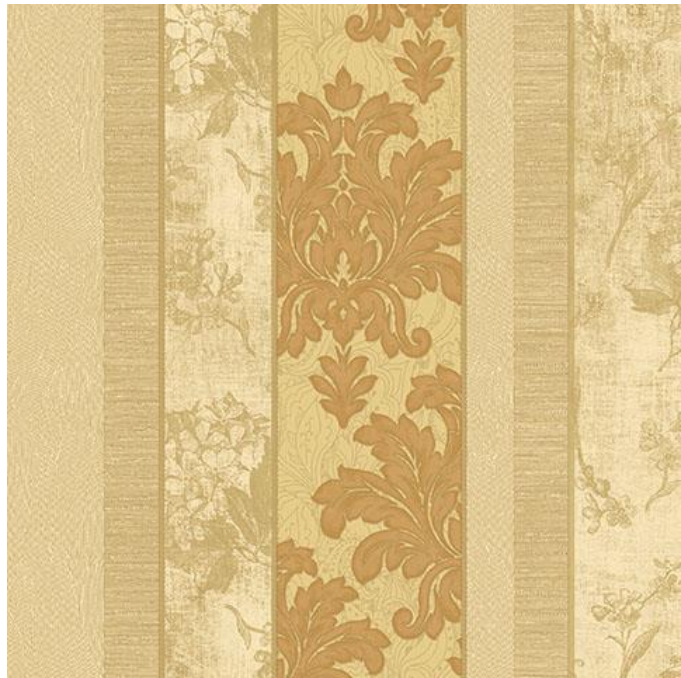






PATTERN : 2544-1

QTY : 14



PATTERN : 2544-3

QTY : 15 +



PATTERN : 2544-4

QTY : 07



PATTERN : 2547-2

QTY : 01



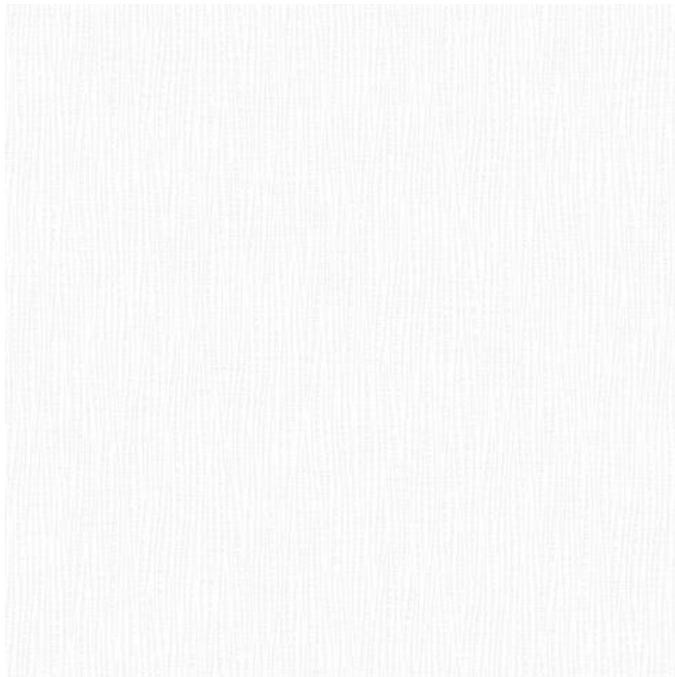
PATTERN : 2547-3

QTY : 15 +



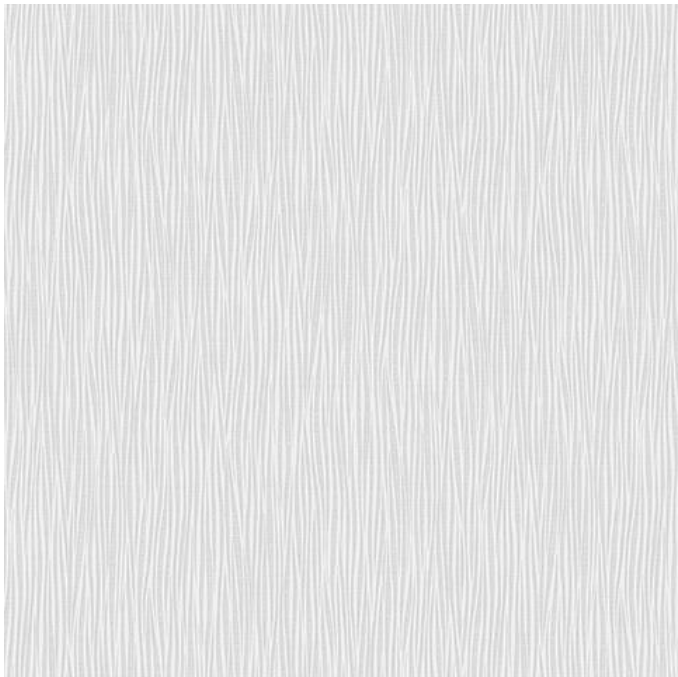
PATTERN : 2547-5

QTY : 7



PATTERN : 2601-1

QTY : 15 +



PATTERN : 2601-3

QTY : 05



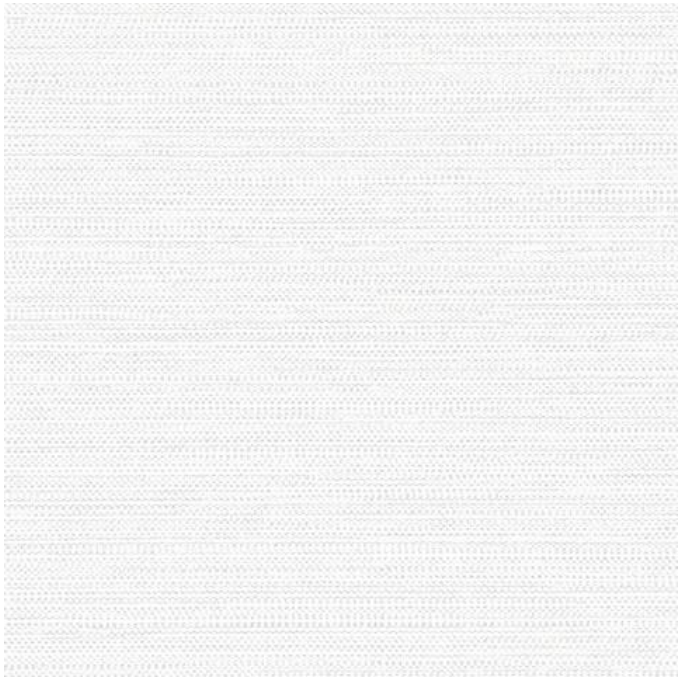
PATTERN : 2602-1

QTY : 15 +



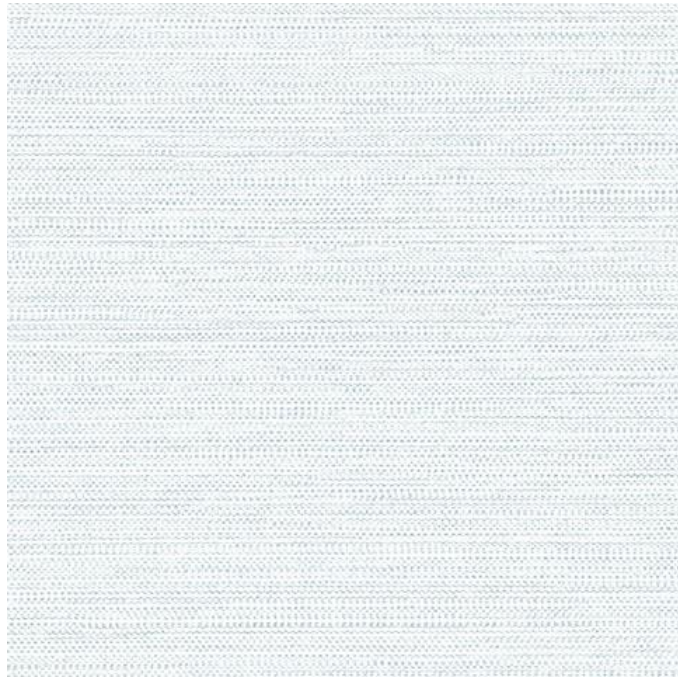
PATTERN : 2602-3

QTY : 11



PATTERN : 2606-1

QTY : 15 +



PATTERN : 2606-2

QTY : 15 +



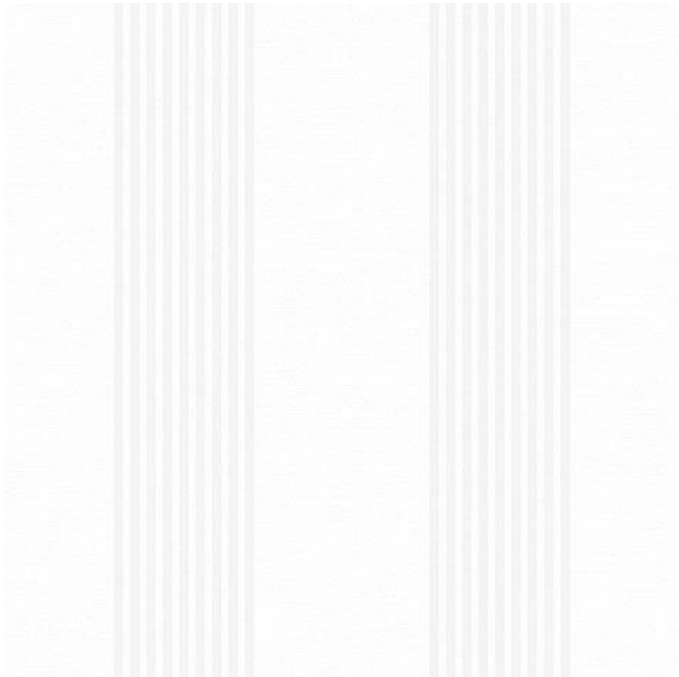
PATTERN : 2607-1

QTY : 15 +



PATTERN : 2607-2

QTY : 1+1+1



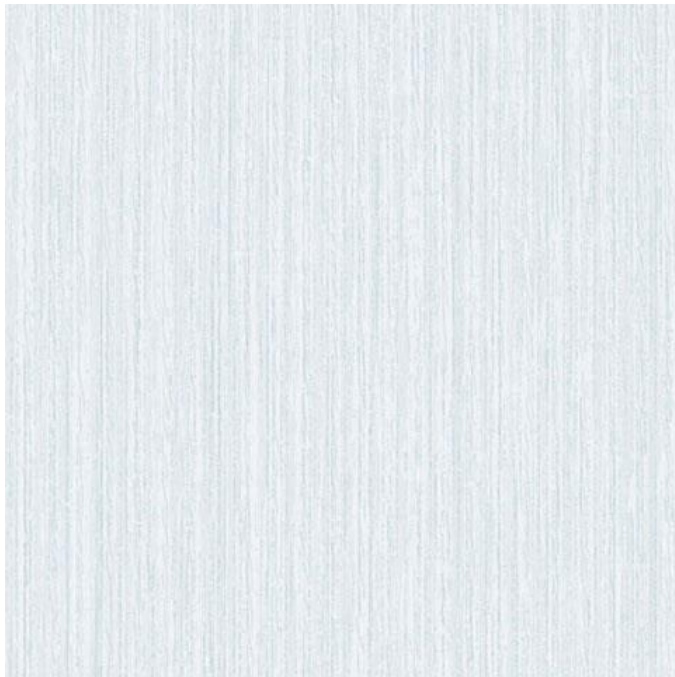
PATTERN : 2608-1

QTY : 15 +



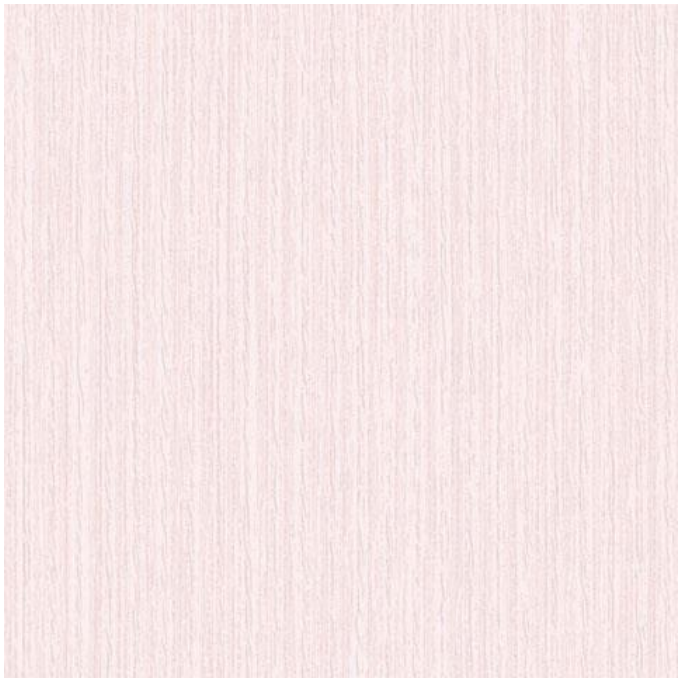
PATTERN : 2608-2

QTY : 3



PATTERN : 2610-1

QTY : 10



PATTERN : 2610-2

QTY : 12



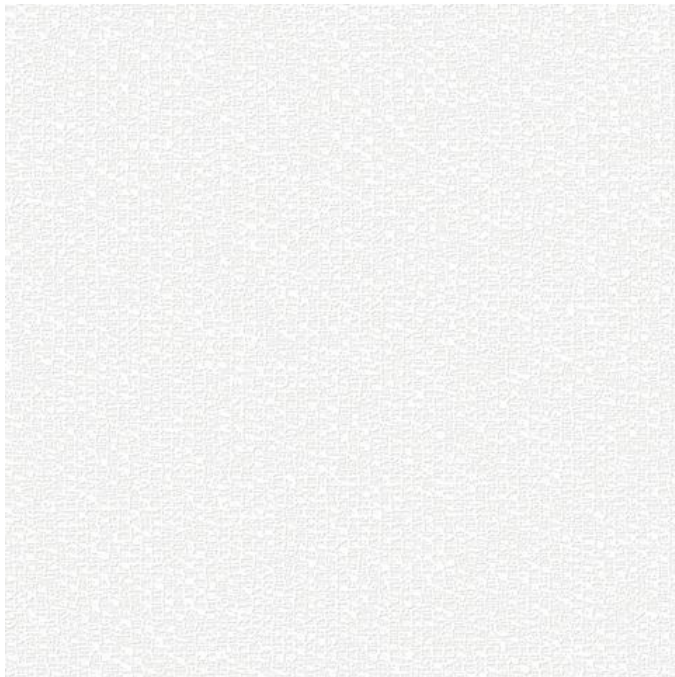
PATTERN : 2611-1

QTY : 3



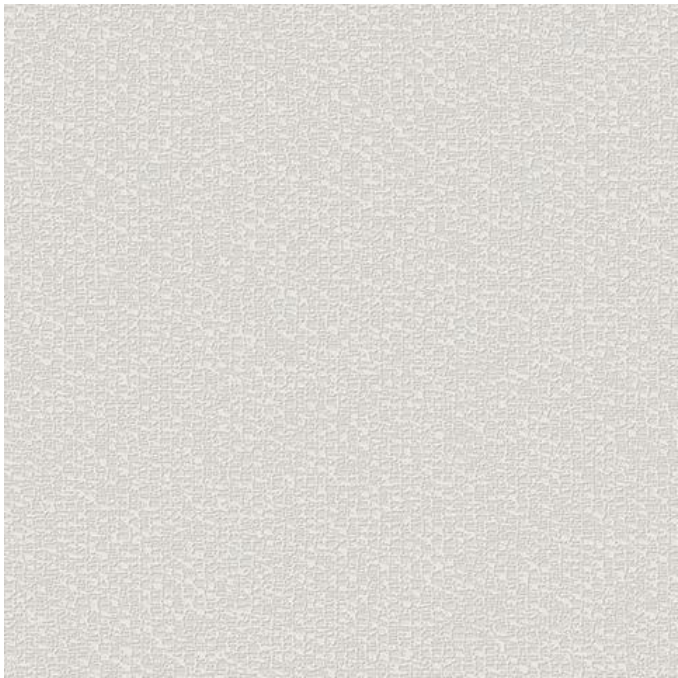
PATTERN : 2611-2

QTY : 7



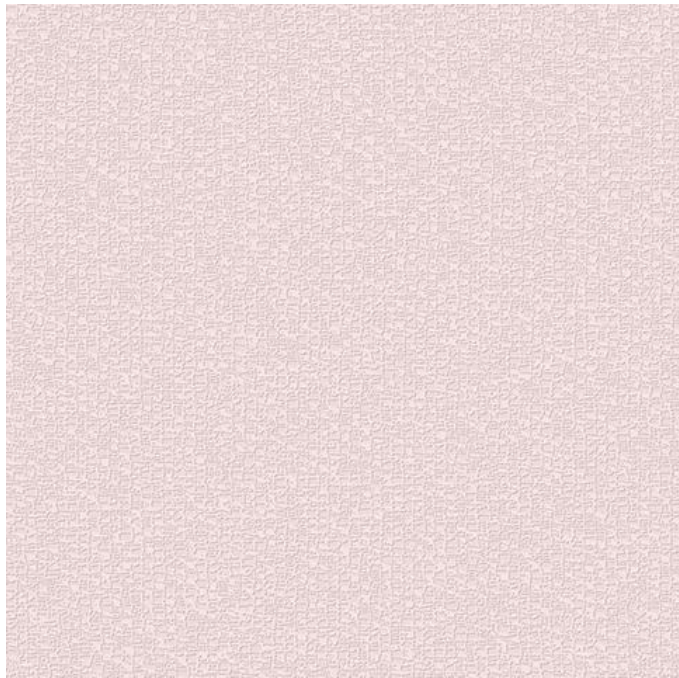
PATTERN : 2614-1

QTY : 15 +



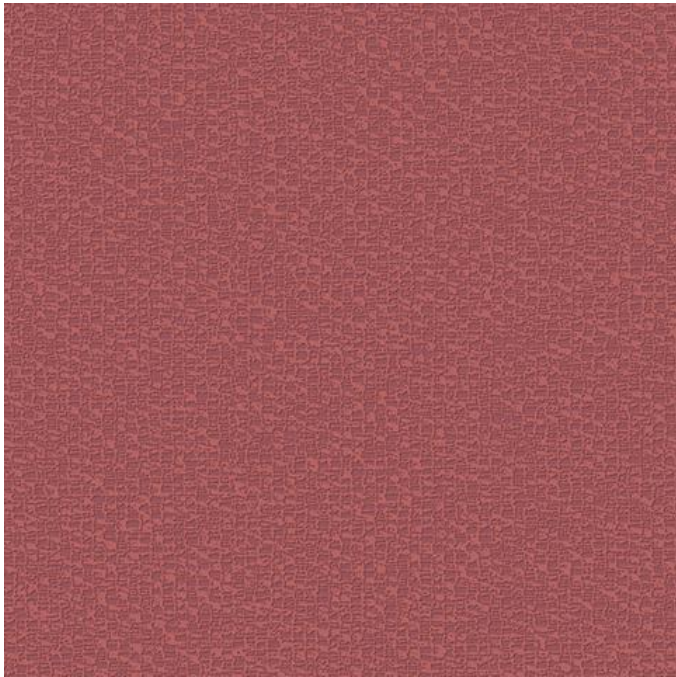
PATTERN : 2614-2

QTY : 14



PATTERN : 2614-3

QTY : 12



PATTERN : 2614-4

QTY : 15 +

INGPLANT; OFTHE/GENUSROSA, INTHE/FAMILYROSACEAE, ORINSEVERALBEAR
ANDTHOUSANDSOFCULTIVARS. THEYFORMA/GROUPOFPLANTS THATCANGROW
THESTEMSTHAT; AREOFTENARMEDWITHSHARPPRICKLES. FLOWERSVARYINSIZE
SHOWY, IN/COLOURSRANGING; FROMWHITETHROUGH/YELLOWSTO REDS. MOST
ALLER; NUMBERSNATIVE; TOEUROPE, NORTH; AMERICA, AND; NORTHWESTERN/AFR
IFALL; WIDELYGROWNFOR/THEIRBEAUTYAND/OFTENARE; FRAGRANT. ROSES
INMANYSOCETIES. ROSEPLANTS/RANGE; IN/SIZESFROMCOMPACTMINIATUREROS
LETERSINHEIGHT, DIFFERENT/SPECIESHYBRIDIZE; EASILY ANDTHEY/SUBGENE
RANGE OFGARDENROSES. AROSEISAWOODYPERENNIALFLOWERING; PLANTOFI
LE, OR/THEFLOWERITBEARS. THERE; AREOVERAHUNDRED; SPECIESANDTHOUS
EPLANTS THATCANBEERECTSHRUBS, CLIMBINGOR/TRAILINGWITHSTEMS THAT
ES. FLOWERS; VARYINSIZEANDSHAPEANDARE; USUALLYLARGEAND/SHOWY. I
UGH; YELLOWSTO REDS. MOST; SPECIESARENATIVE; TOASIA, WITHSMALLERUM
CAANDNORTHWESTERNAFRICA. SPECIES, CULTIVARSAND; HYBRIDSAREWID
EN; AREFRAGRANT. ROSES, HAVEACQUIRED/CULTURALSIGNIFICANCEINMANYSO
COMPACTMINIATUREROSES, TOCLIMBERS; THATCANREACHSEVENMETERS, SINHEI
SILY, AND; THISHAS; BEENUSEDPINTHEDEVELOPMENT; OFTHEWIDERANGE/OF
IALFLOWERING; PLANTOF THEGENUSROSA, INTHE/FAMILYROSACEAE, ORTHE
EDSPECIESOAND; THOUSANDSOFCULTIVARS. THEY/FORMAGROUPOFPLANTS TH
TRAILINGWITH/STEMSTHAT; AREOFTENARMEDWITHSHARPPRICKLES. FLOWE
Y; LARGEAND; SHOWY, IN/COLOURSRANGING; FROMWHITETHROUGHYELLOWSA
AST, WITHSMALLER; NUMBERSNATIVE; TOEUROPE, NORTH; AMERICA, ANDNORTI
DIHYBRIDSAREALL; WIDELYGROWNFOR/THEIRBEAUTYAND/OFTENARE; FRAGR
NIFICANCEINMANYSOCETIES. ROSE; PLANTS/RANGEIN; SIZESFROMCOMPACT, MI
REACH; SEVENMETERS; INHEIGHT, DIFFERENT; SPECIESHYBRIDIZEEASILY ANDT
E; OFTHEWIDERANGE OFGARDENROSES. AROSEISAWOODYPERENNIALFLOWER
MILY; ROSACEAE, ORTHEFLOWERITBEARS. THERE; AREOVERAHUNDRED; SPECIE
RMAGROUP; OFPLANTS THAT; CANBEERECTSHRUBS, CLIMBINGOR; TRAILINGWIT
SHARPPRICKLES. FLOWERS; VARYINSIZEANDSHAPEAND/RE; USUALLYLARGEAN
HITETHROUGHYELLOWSTO REDS. MOST; SPECIESARENATIVE; TOASIA, WITHSM
H; AMERICA, ANDNORTHWESTERNAFRICA. SPECIES, CULTIVARSAND; HYBRIDSARE
ANDOFTEN; AREFRAGRANT. ROSES, HAVEACQUIRED/ CULTURALSIGNIFICANCE IN

PATTERN : 2615-1

QTY : 15 +



PATTERN : 2615-2

QTY : 15 +



PATTERN : 2615-3

QTY : 15 +

PLANT OF THE GENUS ROSA, IN THE FAMILY ROSACEAE, OR THE FAMILY
AND THOUSANDS OF CULTIVARS. THEY FORM A GROUP OF PLANTS THAT ARE OFTEN
THEY ARE OFTEN ARMED WITH SHARP PRICKLES. FLOWERS VARY IN SIZE
SHOW, IN COLOURS RANGING FROM WHITE THROUGH YELLOWS AND REDS. MOST
LARGER NUMBERS NATIVE TO EUROPE, NORTH AMERICA, AND NORTHWESTERN ASIA
ARE WIDELY GROWN FOR THEIR BEAUTY AND OFTEN ARE FRAGRANT. ROSES
RANGE IN SIZE FROM COMPACT MINIATURE ROSES TO TREES AND THOUSANDS
OF DIFFERENT SPECIES HYBRIDIZE EASILY, AND THIS HAS GIVEN RISE TO
A WIDE RANGE OF ROSES. A ROSE IS A WOODY PERENNIAL FLOWERING PLANT OF
THE ORDER ROSALES. THE PLANTS ARE OFTEN ARMED WITH SHARP PRICKLES. FLOWERS
VARY IN SIZE AND SHAPE AND ARE USUALLY LARGE AND SHOWY. IN COLOURS
RANGING FROM WHITE THROUGH YELLOWS AND REDS. MOST SPECIES ARE NATIVE TO ASIA,
NORTH AMERICA, AND NORTHWESTERN AFRICA. SPECIES, CULTIVARS, AND HYBRIDS ARE
WIDELY GROWN FOR THEIR BEAUTY AND OFTEN ARE FRAGRANT. ROSES HAVE
ACQUIRED CULTURAL SIGNIFICANCE IN MANY SOCIETIES. FROM COMPACT
MINIATURE ROSES TO CLIMBERS THAT CAN REACH SEVEN METERS IN HEIGHT,
THEY HAVE BEEN USED IN THE DEVELOPMENT OF THE WIDE RANGE OF
FLOWERING PLANTS OF THE GENUS ROSA, IN THE FAMILY ROSACEAE, OR THE
FAMILY ROSALES. THEY FORM A GROUP OF PLANTS THAT ARE OFTEN ARMED
WITH SHARP PRICKLES. FLOWERS VARY IN SIZE AND SHAPE AND ARE USUALLY
LARGE AND SHOWY. IN COLOURS RANGING FROM WHITE THROUGH YELLOWS
AND REDS. MOST SPECIES ARE NATIVE TO ASIA, NORTH AMERICA, AND
NORTHWESTERN AFRICA. SPECIES, CULTIVARS, AND HYBRIDS ARE WIDELY
GROWN FOR THEIR BEAUTY AND OFTEN ARE FRAGRANT. ROSES HAVE
ACQUIRED CULTURAL SIGNIFICANCE IN MANY SOCIETIES.

PATTERN : 2615-4

QTY : 15 +



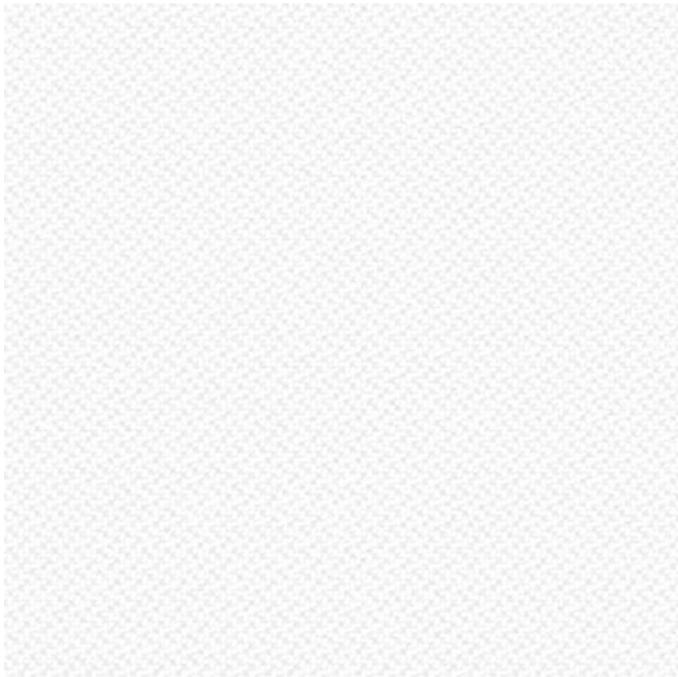
PATTERN : 2616-1

QTY : 15 +



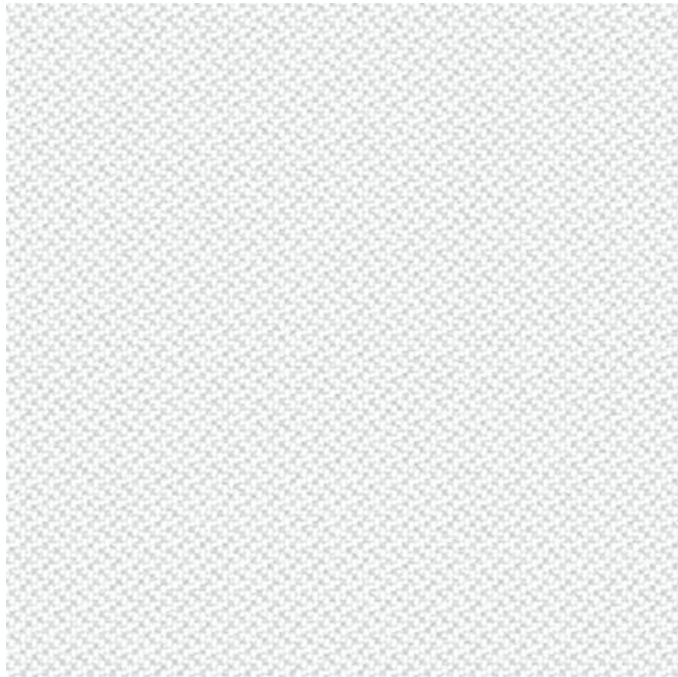
PATTERN : 2616-3

QTY : 03



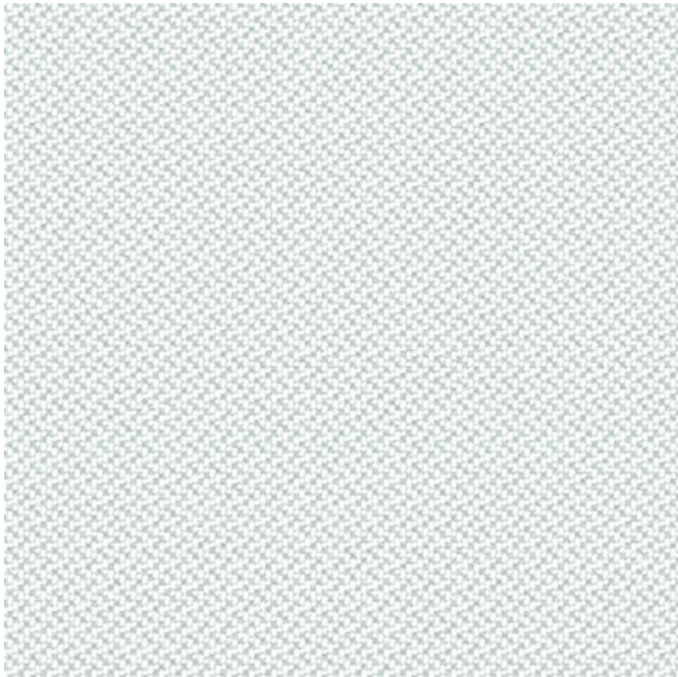
PATTERN : 2617-1

QTY : 03



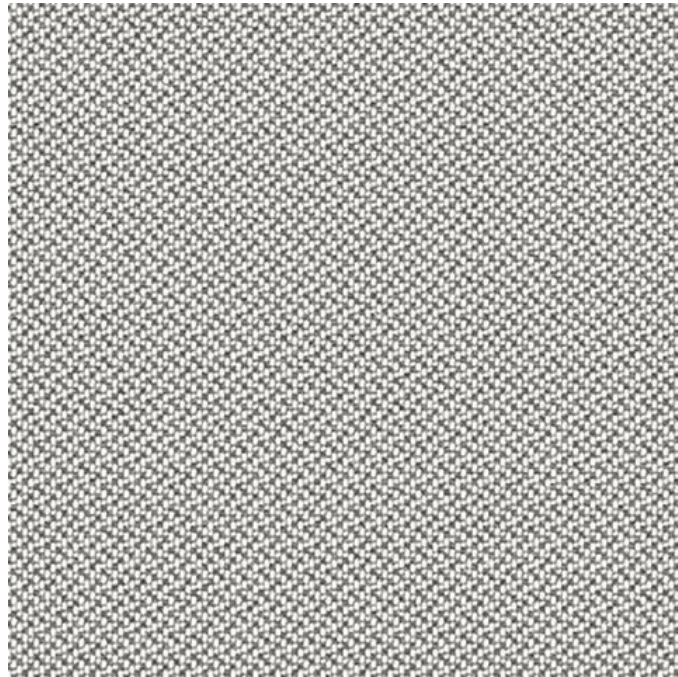
PATTERN : 2617-2

QTY : 15 +



PATTERN : 2617-3

QTY : 15 +



PATTERN : 2617-4

QTY : 15 +



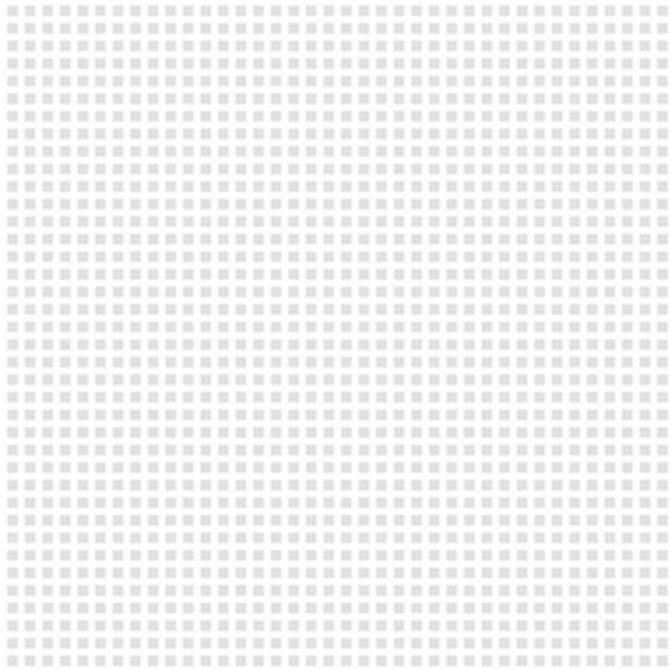
PATTERN : 2618-1

QTY : 15 +



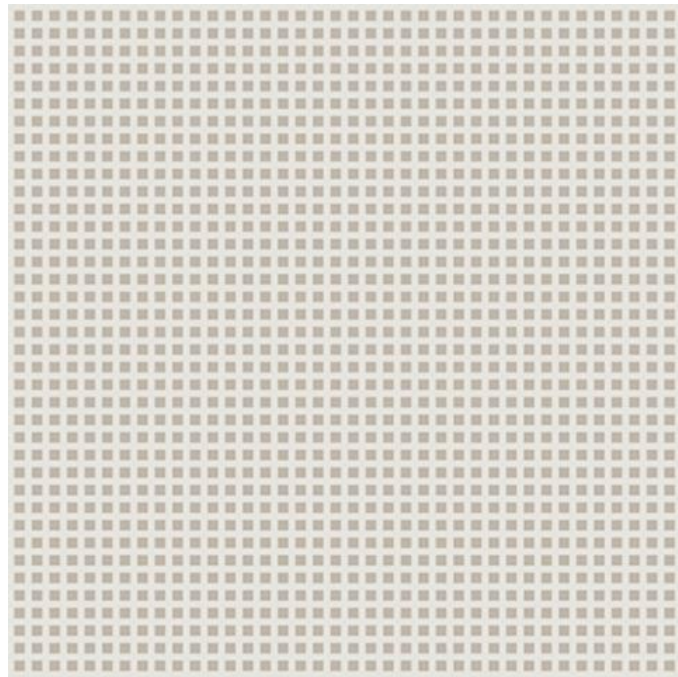
PATTERN : 2618-2

QTY : 13



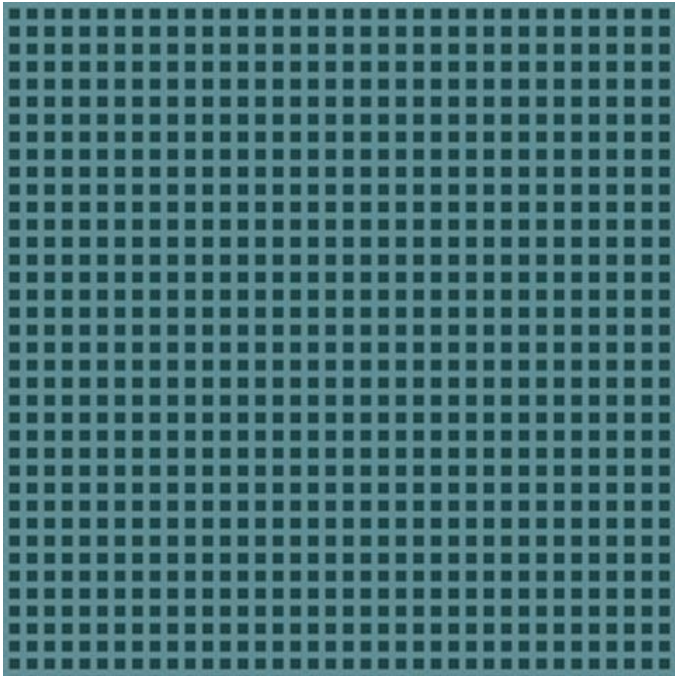
PATTERN : 2619-1

QTY : 15 +



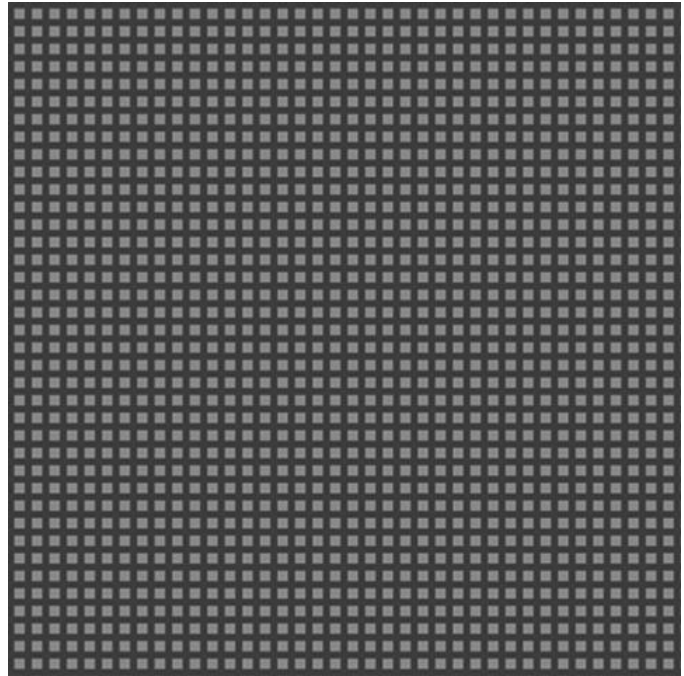
PATTERN : 2619-2

QTY : 15 +



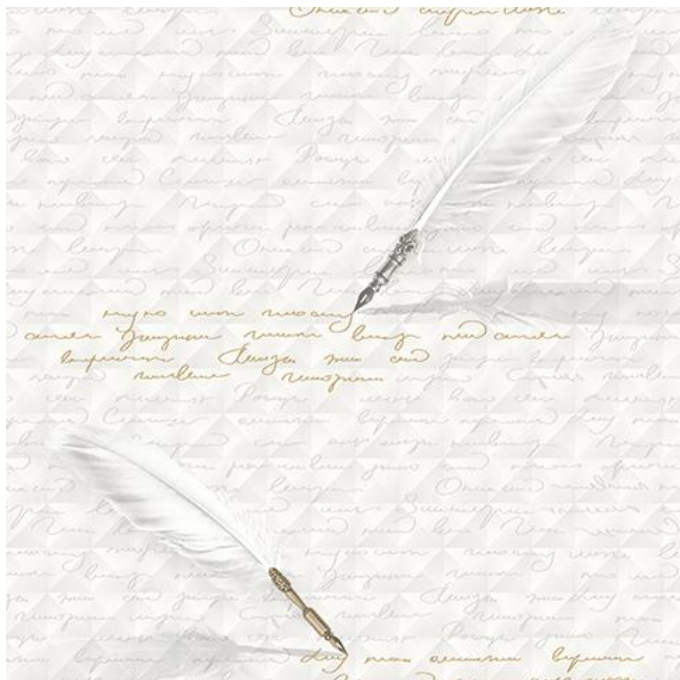
PATTERN : 2619-3

QTY : 10



PATTERN : 2619-4

QTY : 05



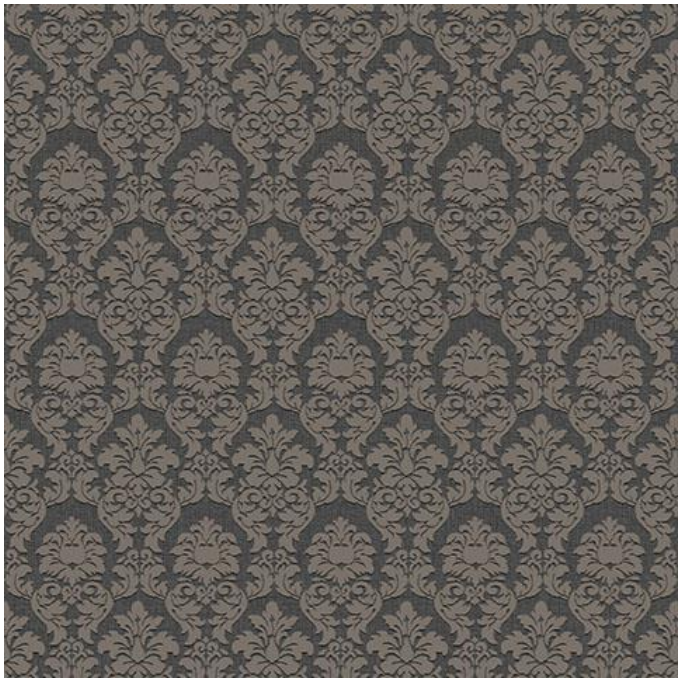
PATTERN : 2620-1

QTY : 15 +



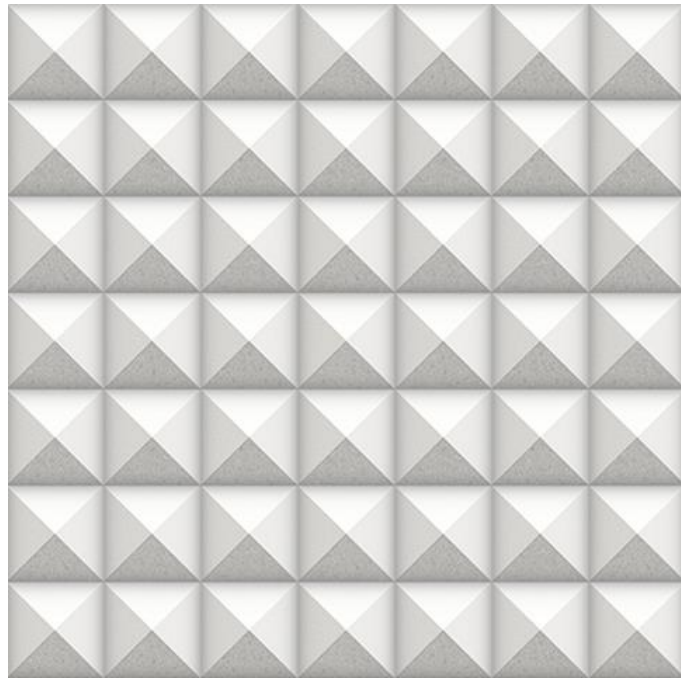
PATTERN : 2620-2

QTY : 1+1



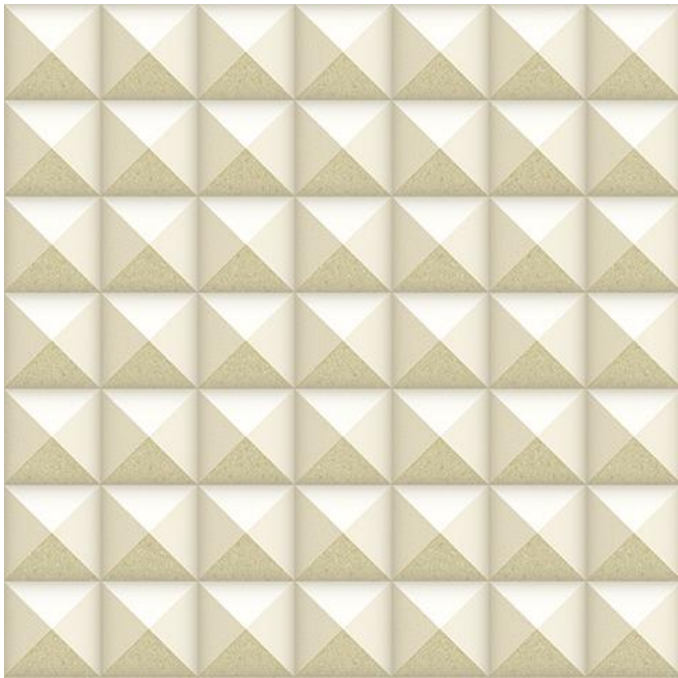
PATTERN : 2621-3

QTY : 12



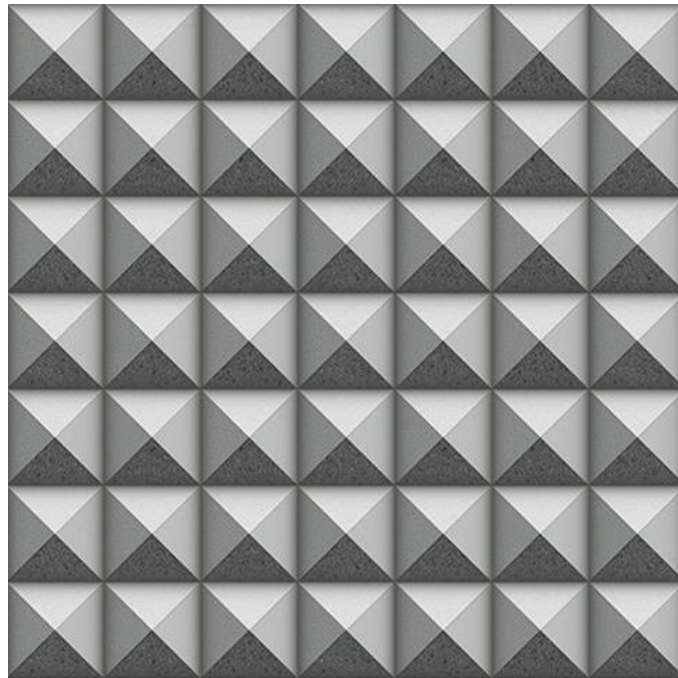
PATTERN : 2622-1

QTY : 15 +



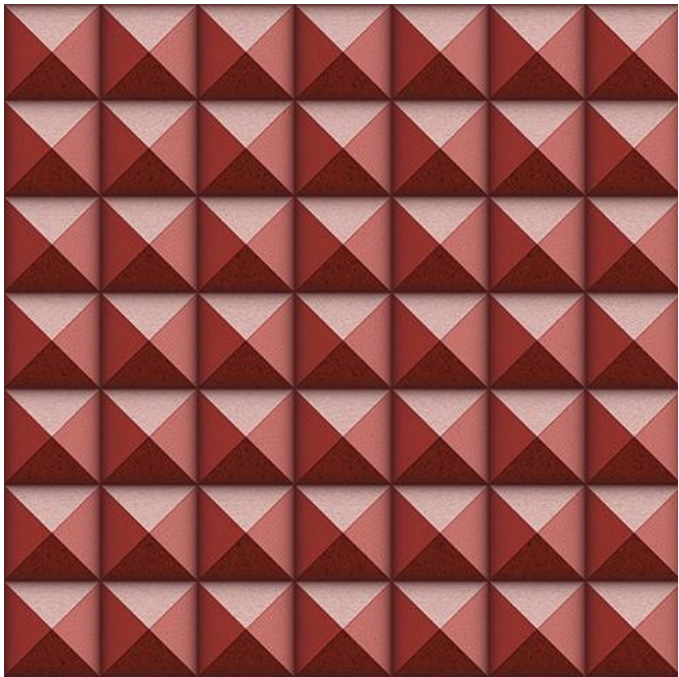
PATTERN : 2622-2

QTY : 12



PATTERN : 2622-3

QTY : 02



PATTERN : 2622-4

QTY : 09



PATTERN : 2623-1

QTY : 15 +



PATTERN : 2623-2

QTY : 15 +



PATTERN : 2624-1

QTY : 13



PATTERN : 2624-3

QTY : 09



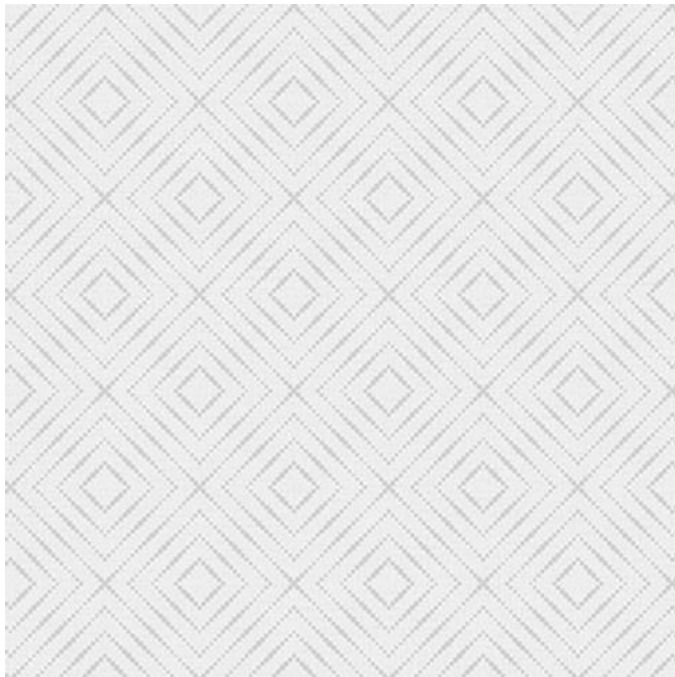
PATTERN : 2625-1

QTY : 6



PATTERN : 2625-2

QTY : 07



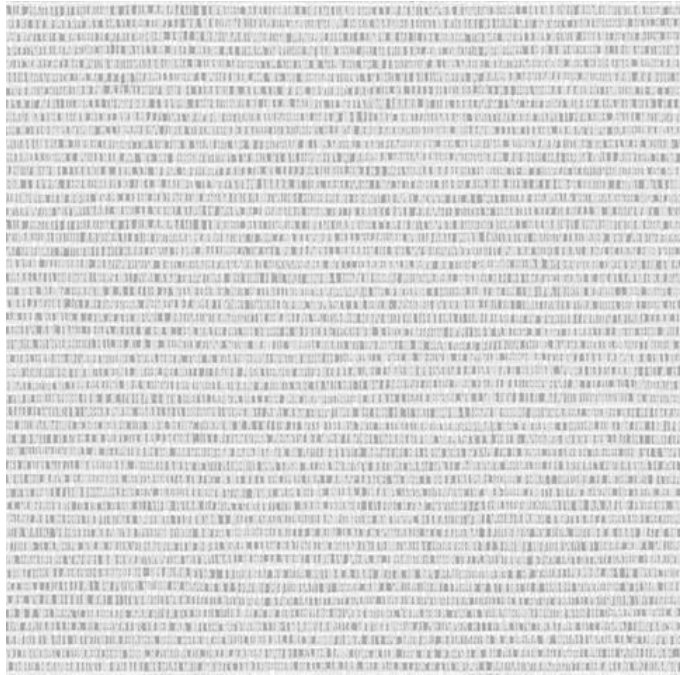
PATTERN : 2625-3

QTY : 15 +



PATTERN : 2627-1

QTY : 15 +



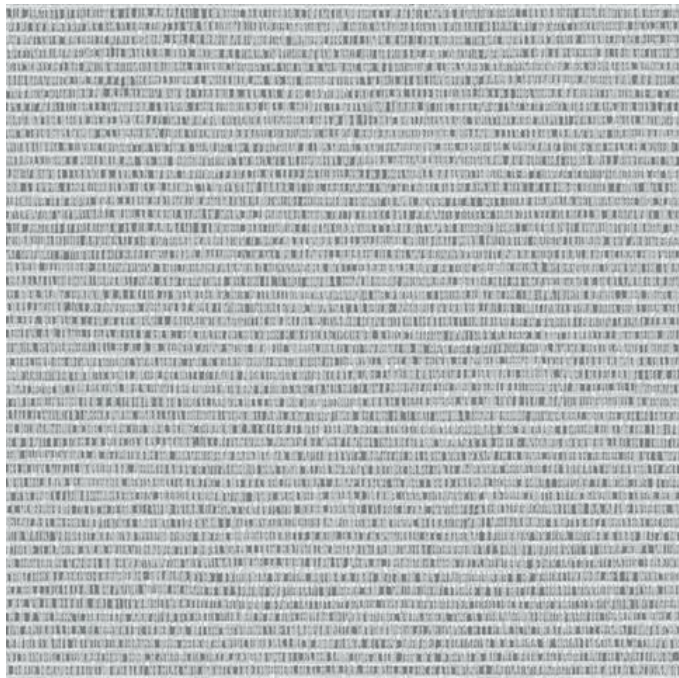
PATTERN : 2627-2

QTY : 02



PATTERN : 2627-3

QTY : 8



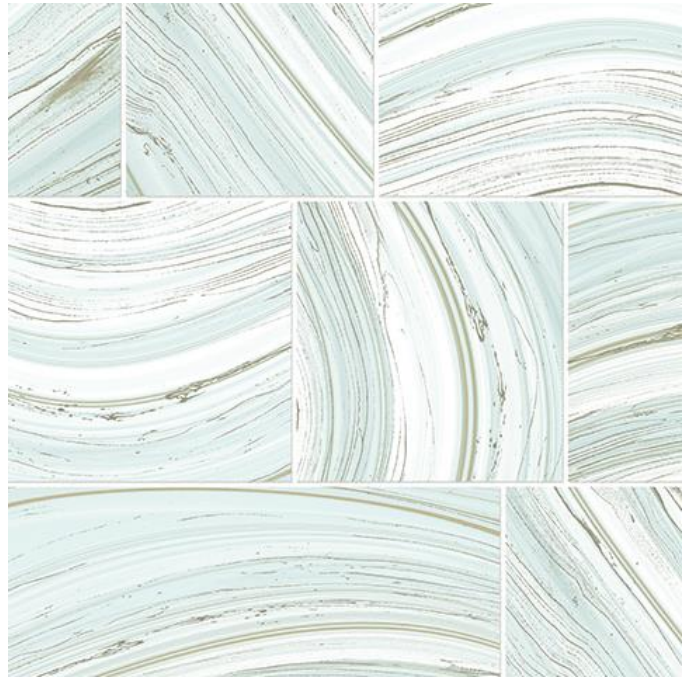
PATTERN : 2627-4

QTY : 15 +



PATTERN : 2628-1

QTY : 01



PATTERN : 2628-2

QTY : 15 +